

APPROVED AS TO IMPACT ON STATE FACILITIES AND CONFORMANCE WITH APPLICABLE STATE STANDARDS AND PRACTICES AND THAT TECHNICAL OVERSIGHT WAS PERFORMED.

DATE SIGNED

LICENSE Exp DATE

LICENSE No.

CALTRANS DESIGN OVERSIGHT APPROVAL

CONSULTANT SENIOR LANDSCAPE ARCHITECT

KIM S. RHODES

INDEX OF PLANS

SHEET No.	DESCRIPTION
01	TITLE AND LOCATION MAP
02-04	ROADSIDE CLEARING LAYOUT PLAN
05-07	LANDSCAPE LAYOUT PLAN
08	LANDSCAPE DETAILS
09-10	LANDSCAPE QUANTITIES
11	IRRIGATION SPRINKLER SCHEDULE
12-14	IRRIGATION PLAN
15	IRRIGATION DETAILS
16-17	IRRIGATION QUANTITIES
18-21	WATER EFFICIENT LANDSCAPE CALCULATION
22	PLANTING LEGEND
23-25	PLANTING PLAN
26	PLANTING QUANTITIES

THE STANDARD PLANS LIST APPLICABLE TO THIS CONTRACT IS INCLUDED IN THE NOTICE TO BIDDERS AND SPECIAL PROVISIONS BOOK.

STATE OF CALIFORNIA

DEPARTMENT OF TRANSPORTATION

PROJECT PLANS FOR CONSTRUCTION ON

STATE HIGHWAY

IN RIVERSIDE COUNTY

IN THE CITY OF LAKE ELSINORE

FROM NORTH OF FRANKLIN STREET OVERCROSSING

TO SOUTH OF WASSON CANYON WASH

TO BE SUPPLEMENTED BY STANDARD PLANS DATED 2022

08

Riv

15

20.5 / 21.5

1

26

LOCATION MAP

BEGIN HIGHWAY PLANTING

Sta "A1" 1095+00

PM 20.5

LAKE ELSINORE

ROUTE 15

MAIN STREET

ROUTE 15

WASSON CANYON WASH

To Corona

To Murrieta

END HIGHWAY PLANTING

Sta "A1" 1120+00

PM 21.5

Kim S. Rhodes

LICENSED LANDSCAPE ARCHITECT

PLANS APPROVAL DATE

THE STATE OF CALIFORNIA OR ITS OFFICERS OR AGENTS SHALL NOT BE RESPONSIBLE FOR THE ACCURACY OR COMPLETENESS OF SCANNED COPIES OF THIS PLAN SHEET.

DAVID EVANS AND ASSOCIATES, INC.

4141 E. INLAND EMPIRE BL. SUITE 250

ONTARIO, CA 91764

CITY OF LAKE ELSINORE

130 SOUTH MAIN STREET

LAKE ELSINORE, CA 92530

CONTRACT No.

08-1G7204

PROJECT ID

XXXXXXXXXX

THE CONTRACTOR SHALL POSSESS THE CLASS (OR CLASSES) OF LICENSE AS SPECIFIED IN THE "NOTICE TO BIDDERS."

NO SCALE

RELATIVE BORDER SCALE IS IN INCHES

0 1 2 3

USERNAME => Rmwe

DGN FILE => 167204ab.dgn

UNIT 2272

PROJECT NUMBER & PHASE XXXXXXXX X

DATE PLOTTED => 19-DEC-2023

TIME PLOTTED => 08:14

Dist	COUNTY	ROUTE	POST MILES TOTAL PROJECT	SHEET No.	TOTAL SHEETS
08	Riv	15	20.5/21.5	2	26

Kim S. Rhodes
LICENSED LANDSCAPE ARCHITECT



PLANS APPROVAL DATE

THE STATE OF CALIFORNIA OR ITS OFFICERS
OR AGENTS SHALL NOT BE RESPONSIBLE FOR
THE ACCURACY OR COMPLETENESS OF SCANNED
COPIES OF THIS PLAN SHEET.

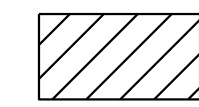
DAVID EVANS AND ASSOCIATES, INC.
4141 E. INLAND EMPIRE BL.
SUITE 250
ONTARIO, CA 91764

CITY OF LAKE ELSINORE
130 SOUTH MAIN STREET
LAKE ELSINORE, CA 92530

NOTE :

FOR ACCURATE RIGHT OF WAY DATA, CONTACT
RIGHT OF WAY ENGINEERING AT THE DISTRICT OFFICE.

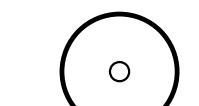
LEGEND:



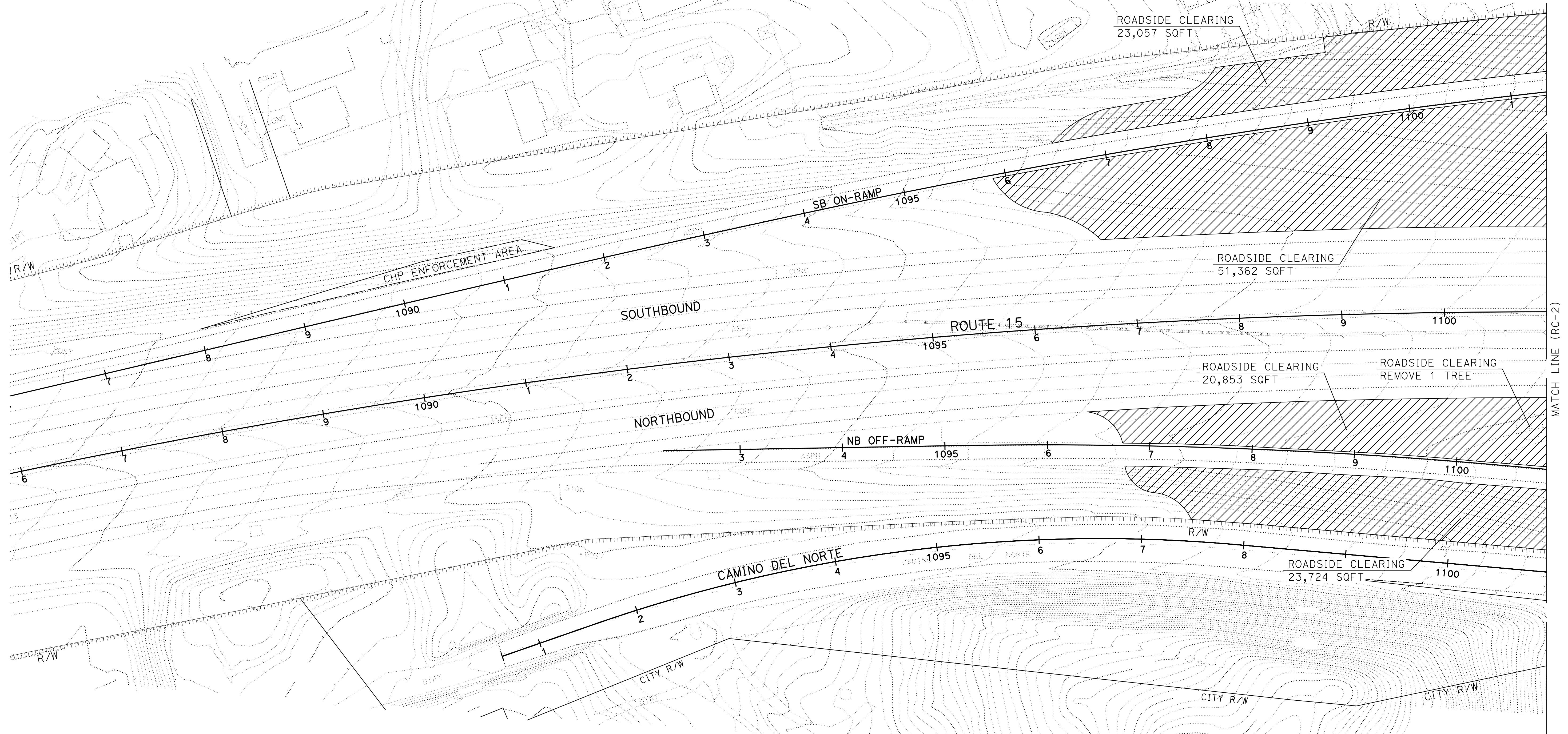
ROADSIDE CLEARING ✖

* INCLUDES REMOVAL OF WOOD MULCH, GRASSES, WEEDS, AND
EXISTING PLANTS AS DESCRIBED UNDER SPECIAL PROVISION 20-1.03C

ROADSIDE CLEARING - TREE REMOVAL



EXISTING TREE - PROTECT IN PLACE TREE



ROADSIDE CLEARING PLAN

SCALE: 1" = 50'

RC-1

APPROVED FOR ROADSIDE CLEARING ONLY

BORDER LAST REVISED 7/2/2010

```

USERNAME => Rmwe
DGN FILE => 1G7204sd001.dgn

```

RELATIVE BORDER SCALE
IS IN INCHES



UNIT 2272

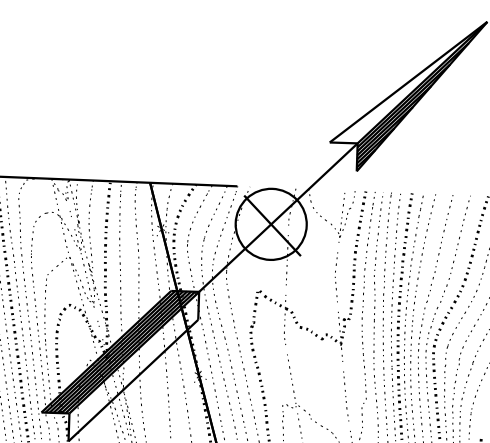
PROJECT NUMBER & PHASE

08160000571

DATE PLOTTED => 19-DEC-2023	LAST REVISION
TIME PLOTTED => 08:16	00-00-00

[illegible]

FOR ACCURATE RIGHT OF WAY DATA, CONTACT
RIGHT OF WAY ENGINEERING AT THE DISTRICT OFFICE.

**RC-2**

RELATIVE BORDER SCALE
IS IN INCHES



08160000571

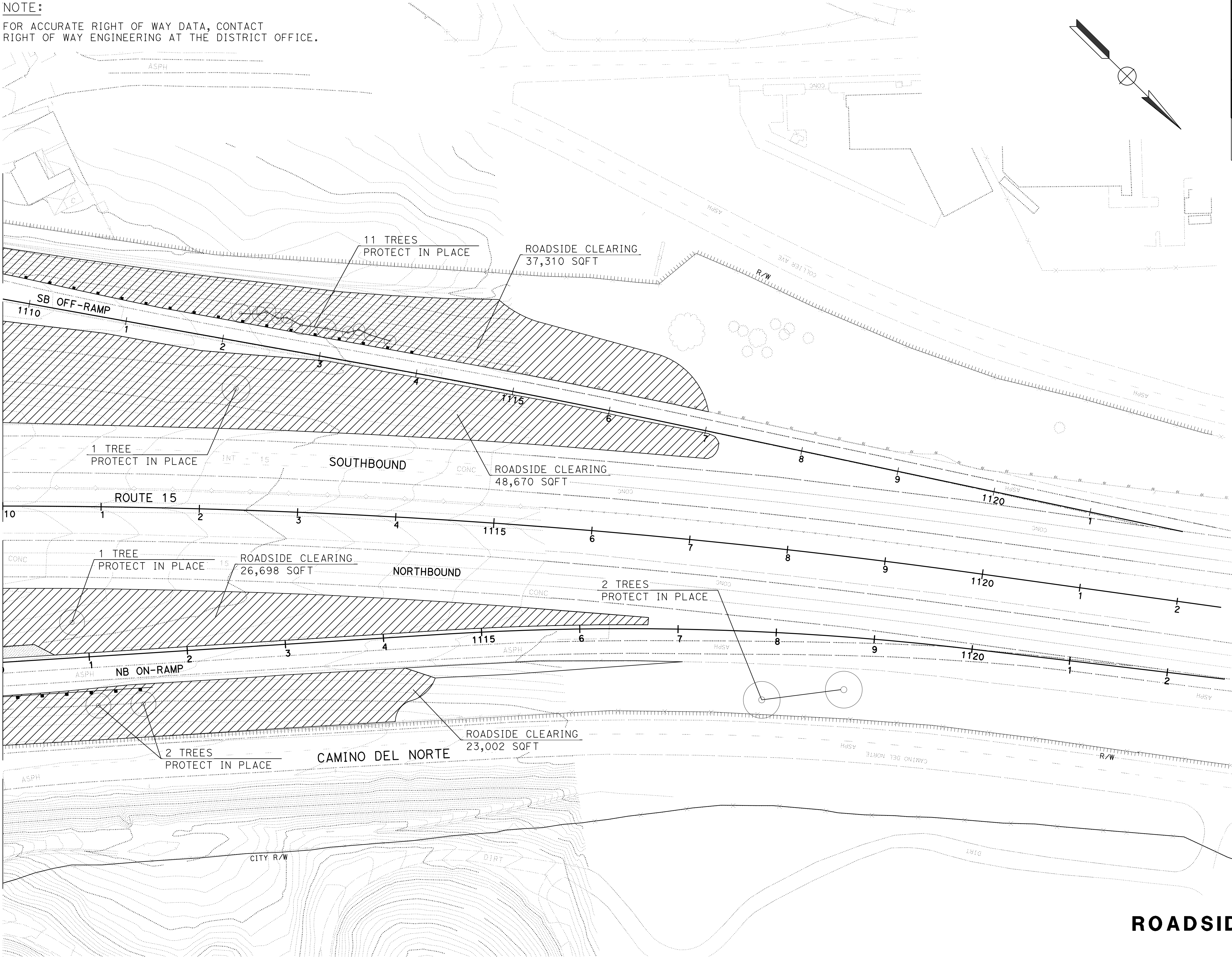
```

USERNAME => Rmwe
DGN FILE => 1G7204sd002.dgn

```

LAST REVISION	DATE PLOTTED => 19-DEC-2023
00-00-00	TIME PLOTTED => 08:17

NOTE:
FOR ACCURATE RIGHT OF WAY DATA, CONTACT
RIGHT OF WAY ENGINEERING AT THE DISTRICT OFFICE.



Dist	COUNTY	ROUTE	POST MILES TOTAL PROJECT	SHEET No.	TOTAL SHEETS
08	Riv	15	20.5/21.5	4	26

Kim S. Rhodes
LICENSED LANDSCAPE ARCHITECT

LICENSED LANDSCAPE ARCHITECT

Kim S. Rhodes
Signature
09/30/2024
Renewal Date
12/18/2023
Date

STATE OF CALIFORNIA

PLANS APPROVAL DATE

THE STATE OF CALIFORNIA OR ITS OFFICERS
OR AGENTS SHALL NOT BE RESPONSIBLE FOR
THE ACCURACY OR COMPLETENESS OF SCANNED
COPIES OF THIS PLAN SHEET.

DAVID EVANS AND ASSOCIATES, INC.
4141 E. INLAND EMPIRE BL.
SUITE 250
ONTARIO, CA 91764

CITY OF LAKE ELSINORE
130 SOUTH MAIN STREET
LAKE ELSINORE, CA 92530

ROADSIDE CLEARING PLAN

SCALE: 1" = 50'

RC-3

APPROVED FOR ROADSIDE CLEARING ONLY

NOTE:
FOR ACCURATE RIGHT OF WAY DATA, CONTACT
RIGHT OF WAY ENGINEERING AT THE DISTRICT OFFICE.

LEGEND:

- WOOD MULCH
(APPLY AT 3" DEPTH)
- ROCK BLANKET
- EROSION CONTROL
(SEE SHEET ECL-1)
- MINOR CONCRETE (CONCRETE MOW STRIP)
(SEE LANDSCAPE DETAILS)

DIST	COUNTY	ROUTE	POST MILES TOTAL PROJECT	SHEET NO.	TOTAL SHEETS
08	Riv	15	20.5/21.5	5	26

LICENSED LANDSCAPE ARCHITECT

PLANS APPROVAL DATE

THE STATE OF CALIFORNIA OR ITS OFFICERS
OR AGENTS SHALL NOT BE RESPONSIBLE FOR
THE ACCURACY OR COMPLETENESS OF SCANNED
COPIES OF THIS PLAN SHEET.

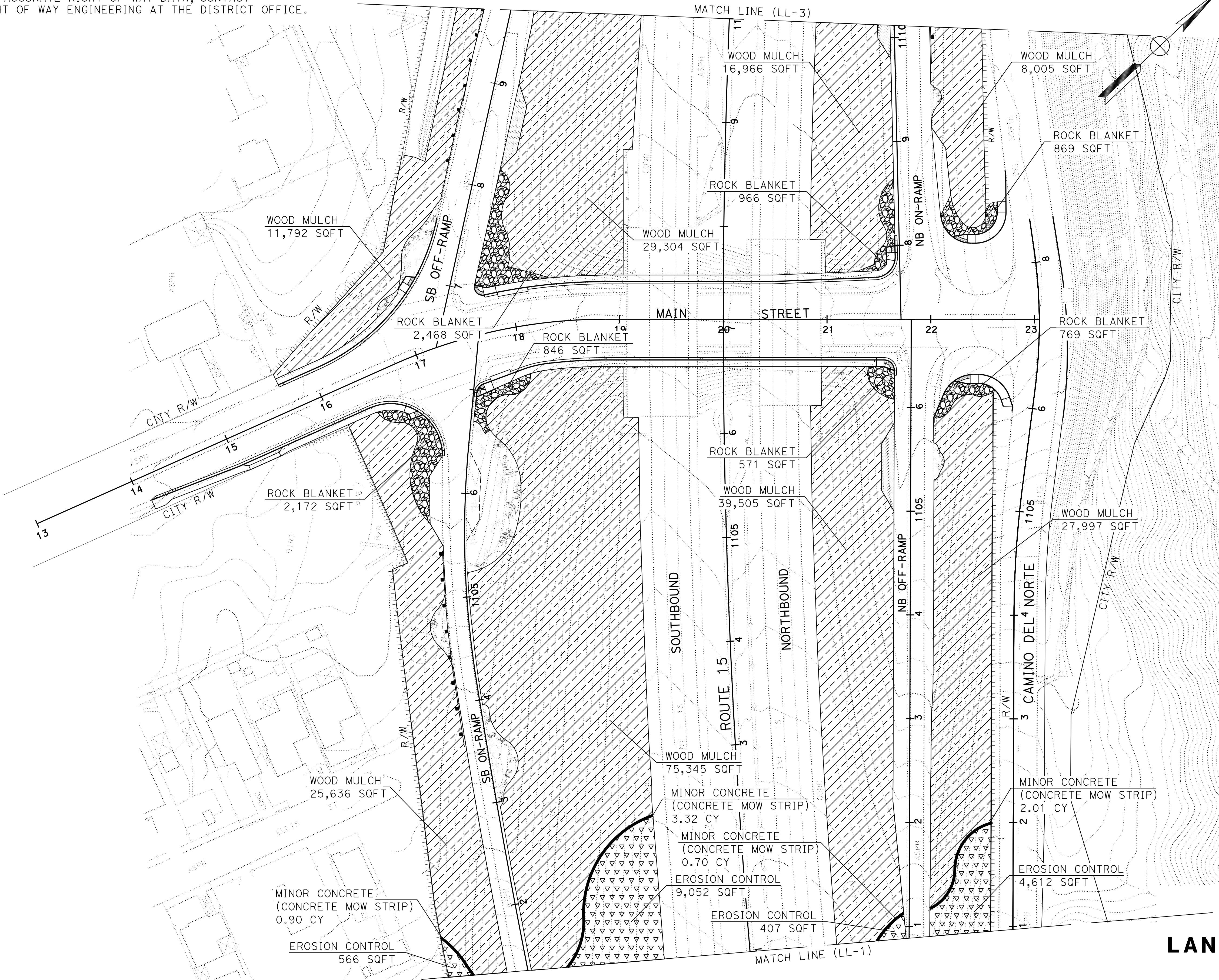
DAVID EVANS AND ASSOCIATES, INC.
4141 E. INLAND EMPIRE BL.
SUITE 250
ONTARIO, CA 91764

CITY OF LAKE ELSINORE
130 SOUTH MAIN STREET
LAKE ELSINORE, CA 92530

LICENSED LANDSCAPE ARCHITECT



NOTE:
FOR ACCURATE RIGHT OF WAY DATA, CONTACT
RIGHT OF WAY ENGINEERING AT THE DISTRICT OFFICE.



Dist	COUNTY	ROUTE	POST MILES TOTAL PROJECT	SHEET No.	TOTAL SHEETS
08	Riv	15	20.5/21.5	6	26

Kim S. Rhodes
LICENSED LANDSCAPE ARCHITECT

LICENSED LANDSCAPE ARCHITECT

Kim S. Rhodes
Signature
09/30/2024
Renewal Date
12/18/2023
State
STATE OF CALIFORNIA

PLANS APPROVAL DATE

THE STATE OF CALIFORNIA OR ITS OFFICERS
OR AGENTS SHALL NOT BE RESPONSIBLE FOR
THE ACCURACY OR COMPLETENESS OF SCANNED
COPIES OF THIS PLAN SHEET.

DAVID EVANS AND ASSOCIATES, INC.
4141 E. INLAND EMPIRE BL.
SUITE 250
ONTARIO, CA 91764

CITY OF LAKE ELSINORE
130 SOUTH MAIN STREET
LAKE ELSINORE, CA 92530


LANDSCAPE LAYOUT PLAN

SCALE: 1" = 50'

LL-2

APPROVED FOR LAYOUT WORK ONLY

STATE OF CALIFORNIA



DEPARTMENT OF TRANSPORTATION

LANDSCAPE ARCHITECTURE

CONSULTANT

FUNCTIONAL SUPERVISOR

CALCULATED-DESIGNED BY

CHECKED BY

JON-SEN OEN

TODD D. HOLMES

REVISED BY

DATE REVISED

ROCK BLANKET

SHEET NO.	LOCATION	SQFT
LL-2	MAIN STREET NB EXIT RAMP	1,340
LL-2	MAIN STREET NB ENTRANCE RAMP	1,835
LL-2	MAIN STREET SB EXIT RAMP	2,468
LL-2	MAIN STREET SB ENTRANCE RAMP	3,018
	TOTAL	8,661

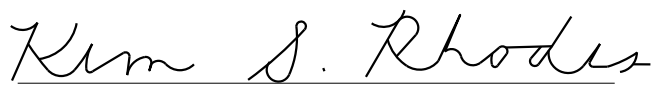
QUANTITIES PER SHEET


BID ITEM	LL-1	LL-2	LL-3	TOTAL
WOOD MULCH	4,007	234,550	43,725	282,282 SQFT (2,614 CY)

MINOR CONCRETE
(CONCRETE MOW STRIP)

SHEET NO.	LOCATION	CY
LL-1	NB ROUTE 15, STA. 1095+94	2.87
LL-1	SB ROUTE 15, STA. 1100+08	0.78
LL-1	SB ROUTE 15, STA. 1100+08	0.71
LL-2	NB ROUTE 15, STA. 1100+10	0.70
LL-2	NB ROUTE 15, STA. 1100+13	2.01
LL-2	SB ROUTE 15, STA. 1100+10	3.32
LL-2	SB ROUTE 15, STA. 1100+10	0.90
LL-3	NB ROUTE 15, STA. 1110+03	2.93
LL-3	NB ROUTE 15, STA. 1110+15	1.83
LL-3	SB ROUTE 15, STA. 1110+10	2.92
LL-3	SB ROUTE 15, STA. 1110+15	1.90
	TOTAL	20.87

Dist	COUNTY	ROUTE	POST MILES TOTAL PROJECT	SHEET No.	TOTAL SHEETS
08	Riv	15	20.5/21.5	9	26


LICENSED LANDSCAPE ARCHITECT



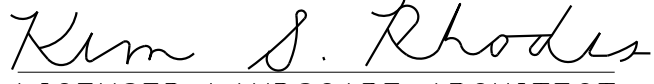
PLANS APPROVAL DATE


THE STATE OF CALIFORNIA OR ITS OFFICERS
OR AGENTS SHALL NOT BE RESPONSIBLE FOR
THE ACCURACY OR COMPLETENESS OF SCANNED
COPIES OF THIS PLAN SHEET.

DAVID EVANS AND ASSOCIATES, INC.
4141 E. INLAND EMPIRE BL.
SUITE 250
ONTARIO, CA 91764

CITY OF LAKE ELSINORE
130 SOUTH MAIN STREET
LAKE ELSINORE, CA 92530

Dist	COUNTY	ROUTE	POST MILES TOTAL PROJECT	SHEET No.	TOTAL SHEETS
08	Riv	15	20.5/21.5	11	26


LICENSED LANDSCAPE ARCHITECT



PLANS APPROVAL DATE

THE STATE OF CALIFORNIA OR ITS OFFICERS
OR AGENTS SHALL NOT BE RESPONSIBLE FOR
THE ACCURACY OR COMPLETENESS OF SCANNED
COPIES OF THIS PLAN SHEET.

DAVID EVANS AND ASSOCIATES, INC.
4141 E. INLAND EMPIRE BL.
SUITE 250
ONTARIO, CA 91764

CITY OF LAKE ELSINORE
130 SOUTH MAIN STREET
LAKE ELSINORE, CA 92530

IRRIGATION SPRINKLER SCHEDULE

SYMBOL	ITEM DESCRIPTION	SPRAY PATTERN	RADIUS	OPERATING PRESSURE	DISCHARGE RATE (+/- 5%)	PRECIPITATION RATE (+/- 5%)	INLET CONNECTION DIAMETER	SWING JOINT TYPE	RISER SPRINKLER ASSEMBLY			POP-UP SPRINKLER ASSEMBLY	TREE WELL DRAINPIPE LENGTH	REMARKS
									TYPE	HEIGHT	MATERIAL	SPRINKLER PROTECTOR TYPE		
6	RISER SPRINKLER ASSEMBLY (GEAR DRIVEN)	F	31	45	1.5	0.15	3/4	I	IV	18	PL			STANDARD RISER ① ② ③
6	RISER SPRINKLER ASSEMBLY (GEAR DRIVEN)	P	31	45	1.5	0.30	3/4	I	IV	18	PL			STANDARD RISER ① ② ③
7	RISER SPRINKLER ASSEMBLY (GEAR DRIVEN)	F	34	45	2.0	0.16	3/4	I	IV	18	PL			STANDARD RISER ① ② ③
7	RISER SPRINKLER ASSEMBLY (GEAR DRIVEN)	P	34	45	2.0	0.33	3/4	I	IV	18	PL			STANDARD RISER ① ② ③
8	RISER SPRINKLER ASSEMBLY (GEAR DRIVEN)	P	40	45	4.0	0.24	3/4	I	IV	18	PL			STANDARD RISER ① ② ③
8	RISER SPRINKLER ASSEMBLY (GEAR DRIVEN)	F	40	45	4.0	0.48	3/4	I	IV	18	PL			STANDARD RISER ① ② ③
o	TREE WELL SPRINKLER ASSEMBLY	F		30	0.25	1.20	1/2	III	I	12	PL		8	INSTALL ONE (1) BUBBLERS PER SHRUB ②③
●	TREE WELL SPRINKLER ASSEMBLY	F		30	0.25	1.20	1/2	III	I	12	PL		8	INSTALL TWO (2) BUBBLERS FOR EACH TREE ②③

NOTES: APPLICABLE WHERE CIRCLED

- ① INSTALL CHECK VALVE TO AVOID LOW HEAD DRAINAGE
- ② SEE TREE WELL SPRINKLER ASSEMBLY STANDARD PLAN RSP H4.
- ③ INSTALL SPRINKLER PROTECTOR (TYPE 1) IF HEAD IS LOCATED ADJACENT TO ROADWAY

IRRIGATION SPRINKLER SCHEDULE

ISS-1

NOTE:
FOR ACCURATE RIGHT OF WAY DATA, CONTACT
RIGHT OF WAY ENGINEERING AT THE DISTRICT OFFICE.

SIZE OF PIPE OR AS SHOWN ON PLAN		QUANTITY OF SPRINKLERS							
		TYPE A-6	TYPE A-6	TYPE A-7	TYPE A-7	TYPE A-8	TYPE A-8	TYPE C-2	TYPE C-2
SIZE	MAX (GPM)	6	6	7	7	8	8	●	○
3/4"	8	5	5	4	4	2	2	16	16
1"	12	8	8	6	6	3	3	24	24
1 1/4"	22	14	14	11	11	5	5	44	44
1 1/2"	30	20	20	15	15	7	7	60	60
2"	50	33	33	25	25	12	12	100	100
2 1/2"	75	46	46	35	35	17	17	140	140

Dist

COUNTY

ROUTE

POST MILES
TOTAL PROJECT

SHEET
No.

TOTAL
SHEETS

08

Riv

15

20.5/21.5

12

26

Kim S. Rhodes

LICENSED LANDSCAPE ARCHITECT

Kim S. Rhodes

Signature

09/30/2024

Renewal Date

12/18/2023

State

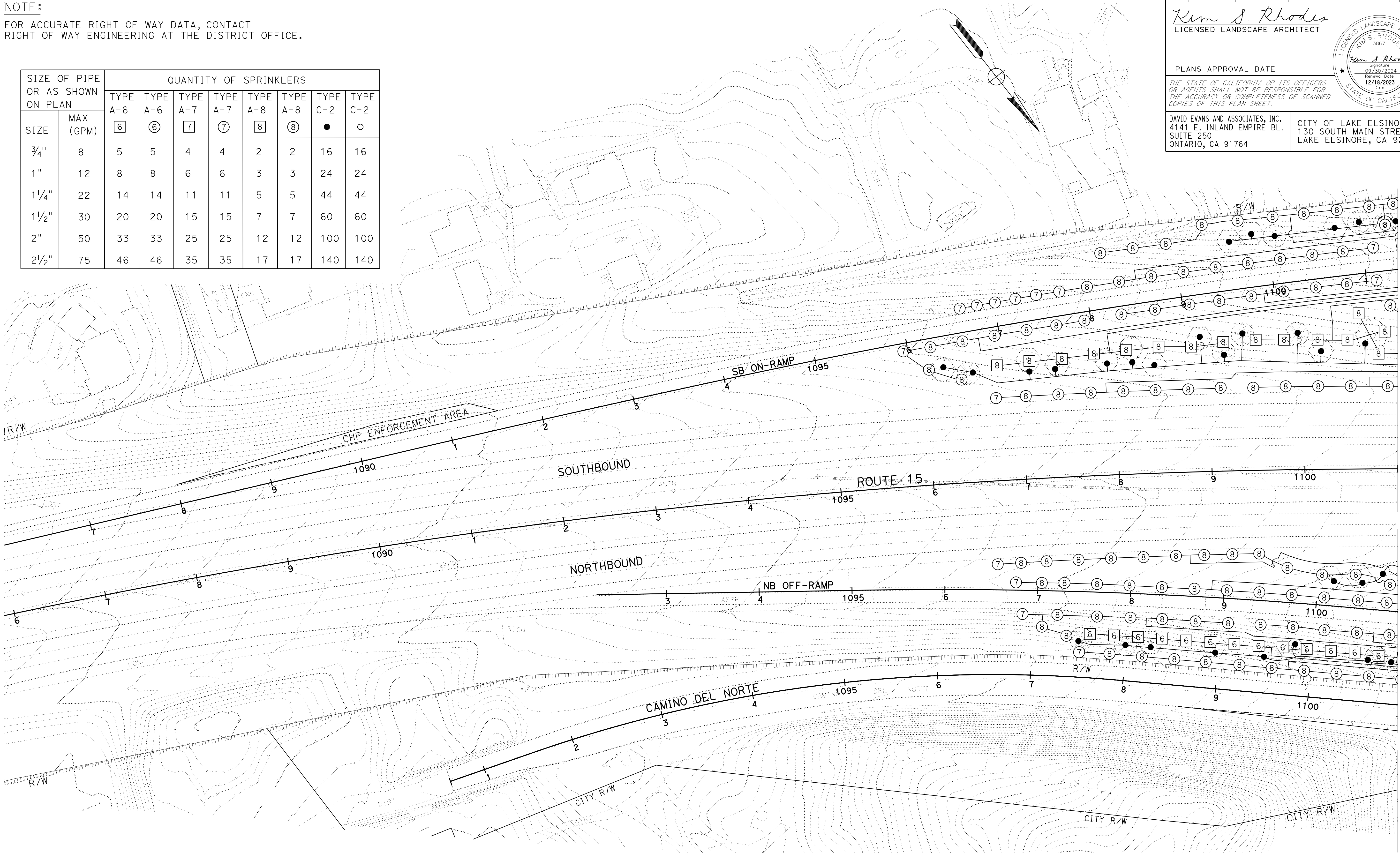
STATE OF CALIFORNIA

PLANS APPROVAL DATE

THE STATE OF CALIFORNIA OR ITS OFFICERS
OR AGENTS SHALL NOT BE RESPONSIBLE FOR
THE ACCURACY OR COMPLETENESS OF SCANNED
COPIES OF THIS PLAN SHEET.

DAVID EVANS AND ASSOCIATES, INC.
4141 E. INLAND EMPIRE BL.
SUITE 250
ONTARIO, CA 91764

CITY OF LAKE ELSINORE
130 SOUTH MAIN STREET
LAKE ELSINORE, CA 92530

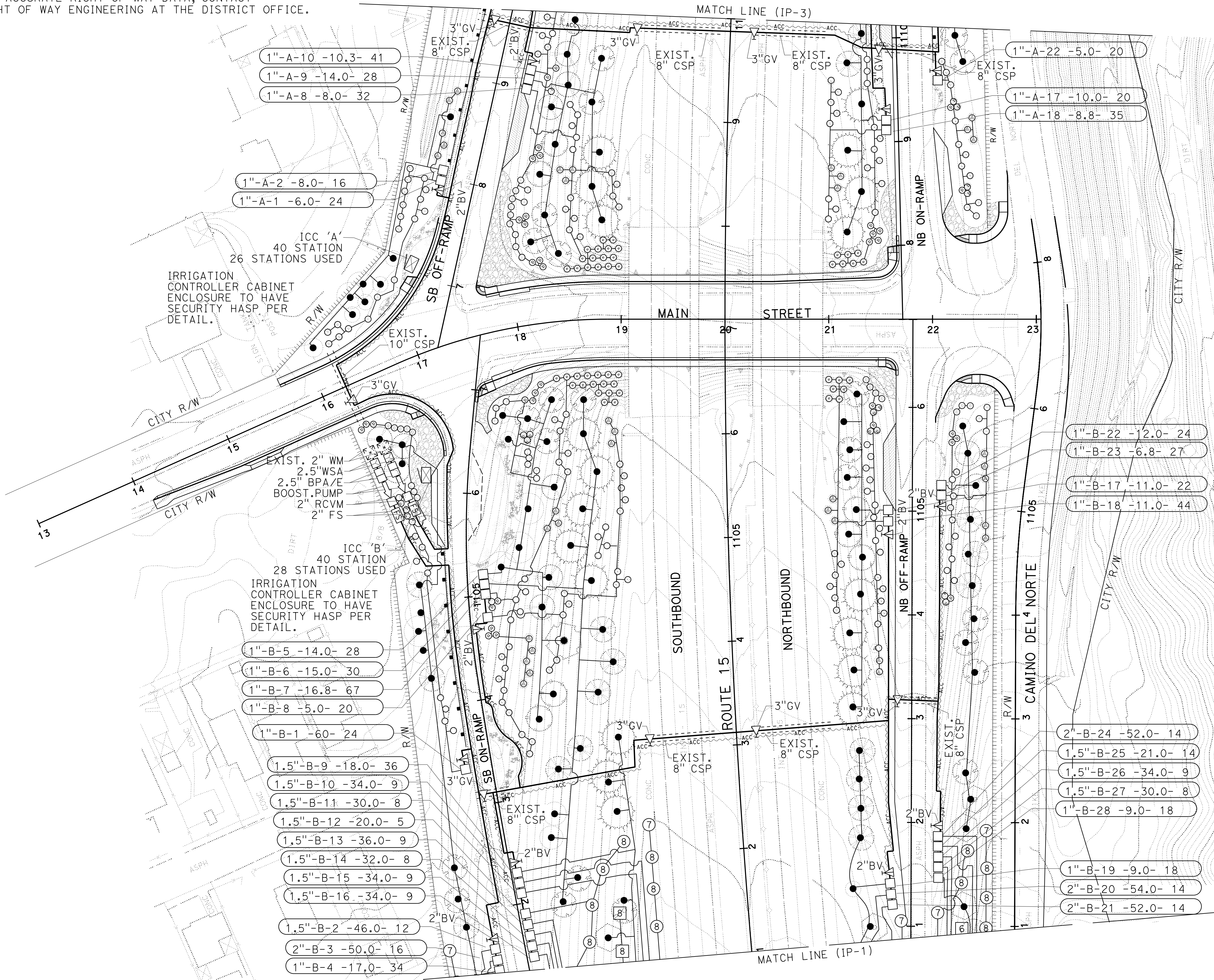


IRRIGATION PLAN

SCALE: 1" = 50'

IP-1

NOTE:
FOR ACCURATE RIGHT OF WAY DATA, CONTACT
RIGHT OF WAY ENGINEERING AT THE DISTRICT OFFICE.



Dist	COUNTY	ROUTE	POST MILES TOTAL PROJECT	SHEET No.	TOTAL SHEETS
08	Riv	15	20.5/21.5	13	26

Kim S. Rhodes
LICENSED LANDSCAPE ARCHITECT

LICENSED LANDSCAPE ARCHITECT

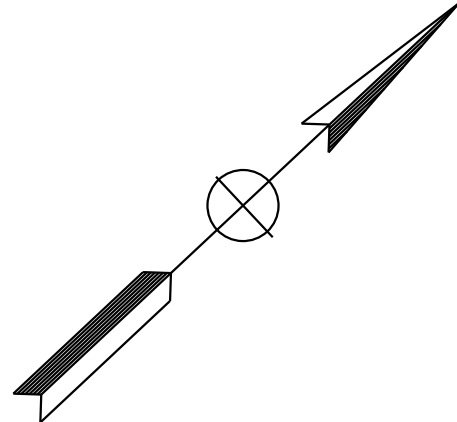
Kim S. Rhodes
3867
Signature
09/30/2024
Renewal Date
12/18/2023
State
STATE OF CALIFORNIA

PLANS APPROVAL DATE

THE STATE OF CALIFORNIA OR ITS OFFICERS
OR AGENTS SHALL NOT BE RESPONSIBLE FOR
THE ACCURACY OR COMPLETENESS OF SCANNED
COPIES OF THIS PLAN SHEET.

DAVID EVANS AND ASSOCIATES, INC.
4141 E. INLAND EMPIRE BL.
SUITE 250
ONTARIO, CA 91764

CITY OF LAKE ELSINORE
130 SOUTH MAIN STREET
LAKE ELSINORE, CA 92530



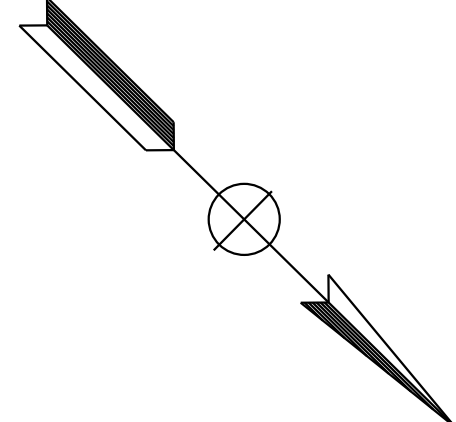
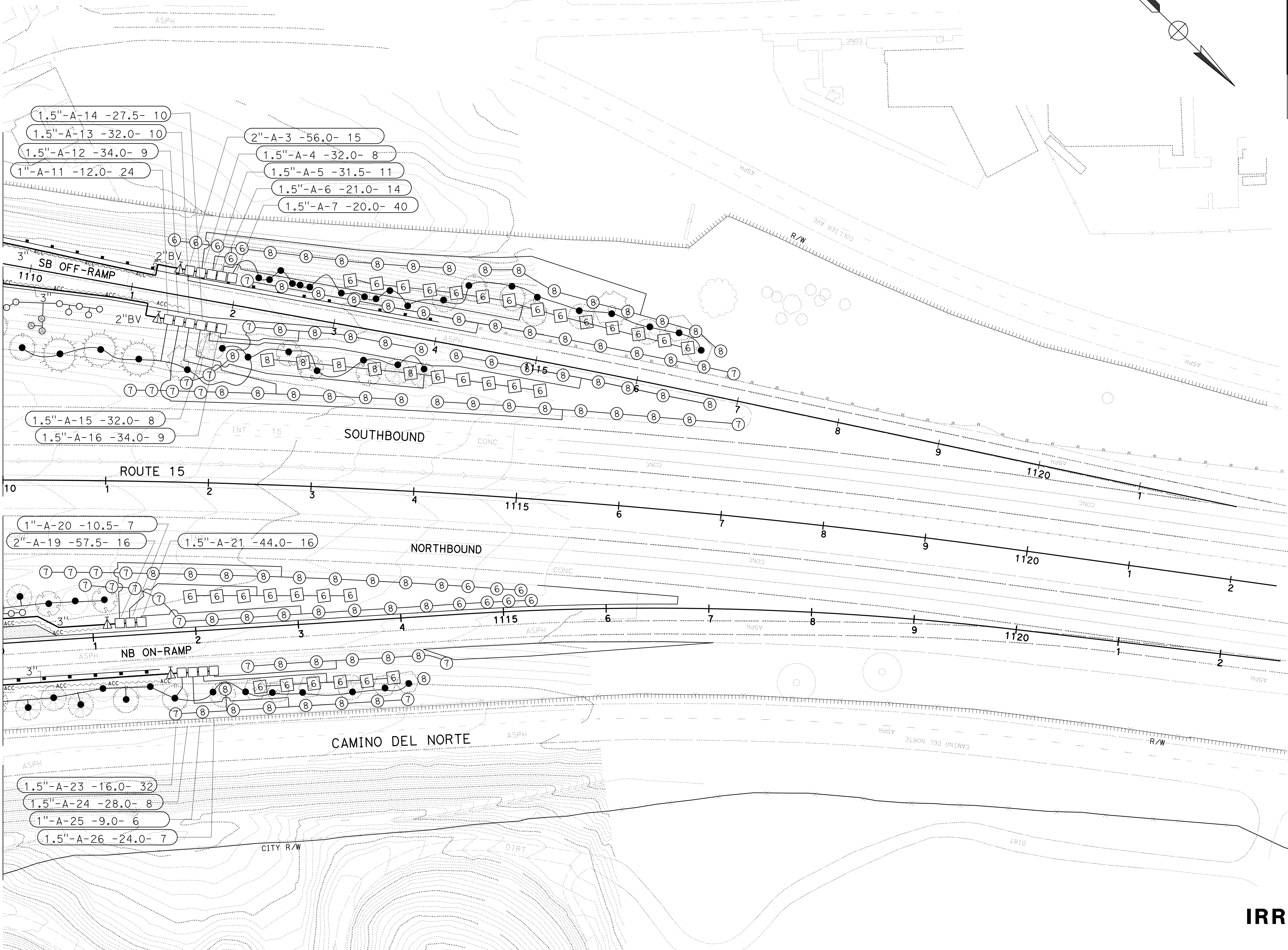
IRRIGATION PLAN

SCALE: 1" = 50'

IP-2

APPROVED FOR IRRIGATION WORK ONLY

NOTE:
FOR ACCURATE RIGHT OF WAY DATA, CONTACT
RIGHT OF WAY ENGINEERING AT THE DISTRICT OFFICE.



Dist	COUNTY	ROUTE	POST MILES TOTAL PROJECT	SHEET No.	TOTAL SHEETS
08	Riv	15	20.5/21.5	14	26

Kim S. Rhodes

LICENSED LANDSCAPE ARCHITECT

PLANS APPROVAL DATE

THE STATE OF CALIFORNIA OR ITS OFFICERS
OR AGENTS SHALL NOT BE RESPONSIBLE FOR
THE ACCURACY OR COMPLETENESS OF SCANNED
COPIES OF THIS PLAN SHEET.

DAVID EVANS AND ASSOCIATES, INC.
4141 E. INLAND EMPIRE BL.
SUITE 250
ONTARIO, CA 91764

CITY OF LAKE ELSINORE
130 SOUTH MAIN STREET
LAKE ELSINORE, CA 92530

LICENSED LANDSCAPE ARCHITECT

Kim S. Rhodes

3867

Signature

09/30/2024

Renewal Date

12/18/2023

Date

STATE OF CALIFORNIA

IRRIGATION PLAN

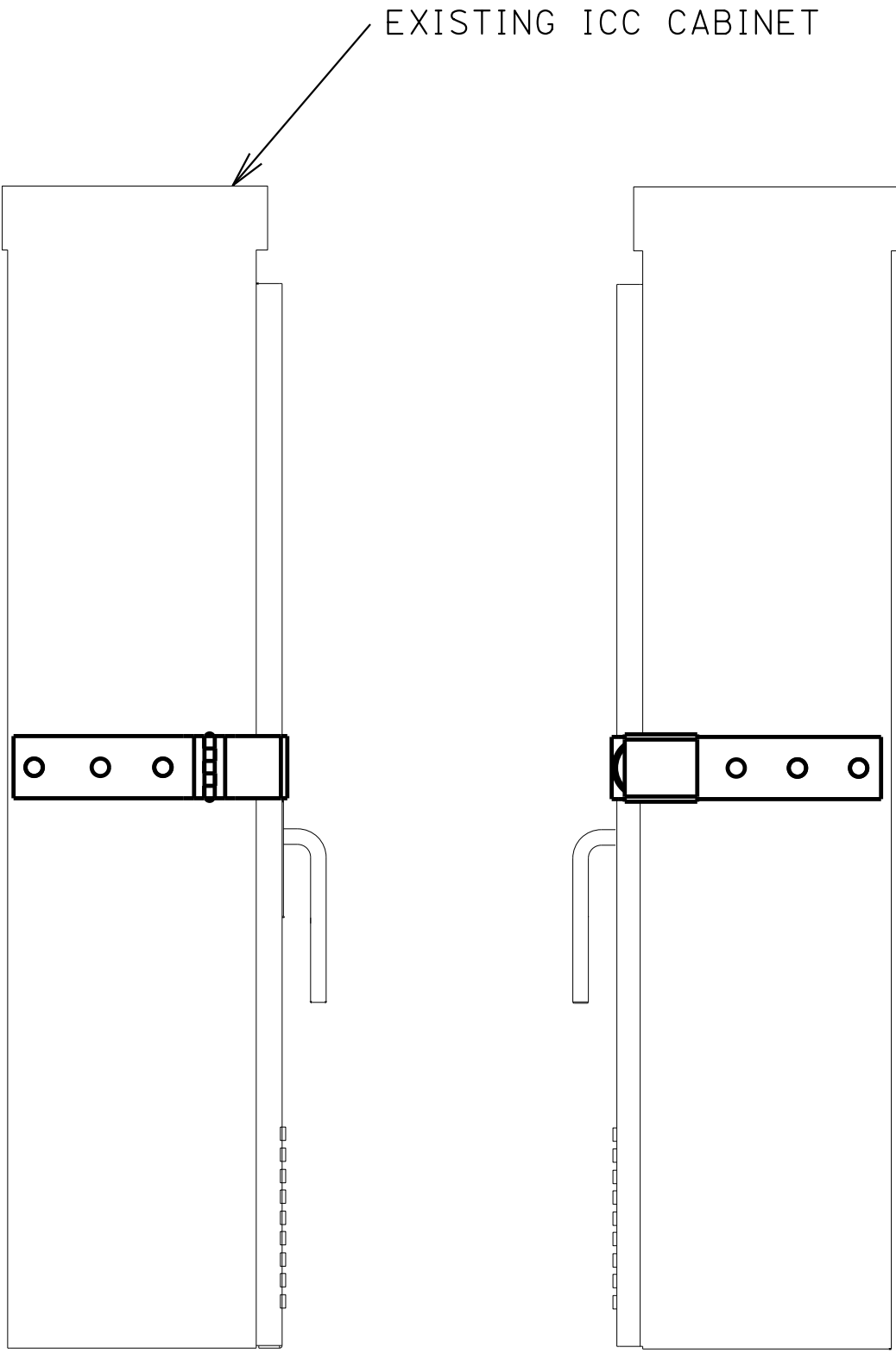
SCALE: 1" = 50'

IP-3

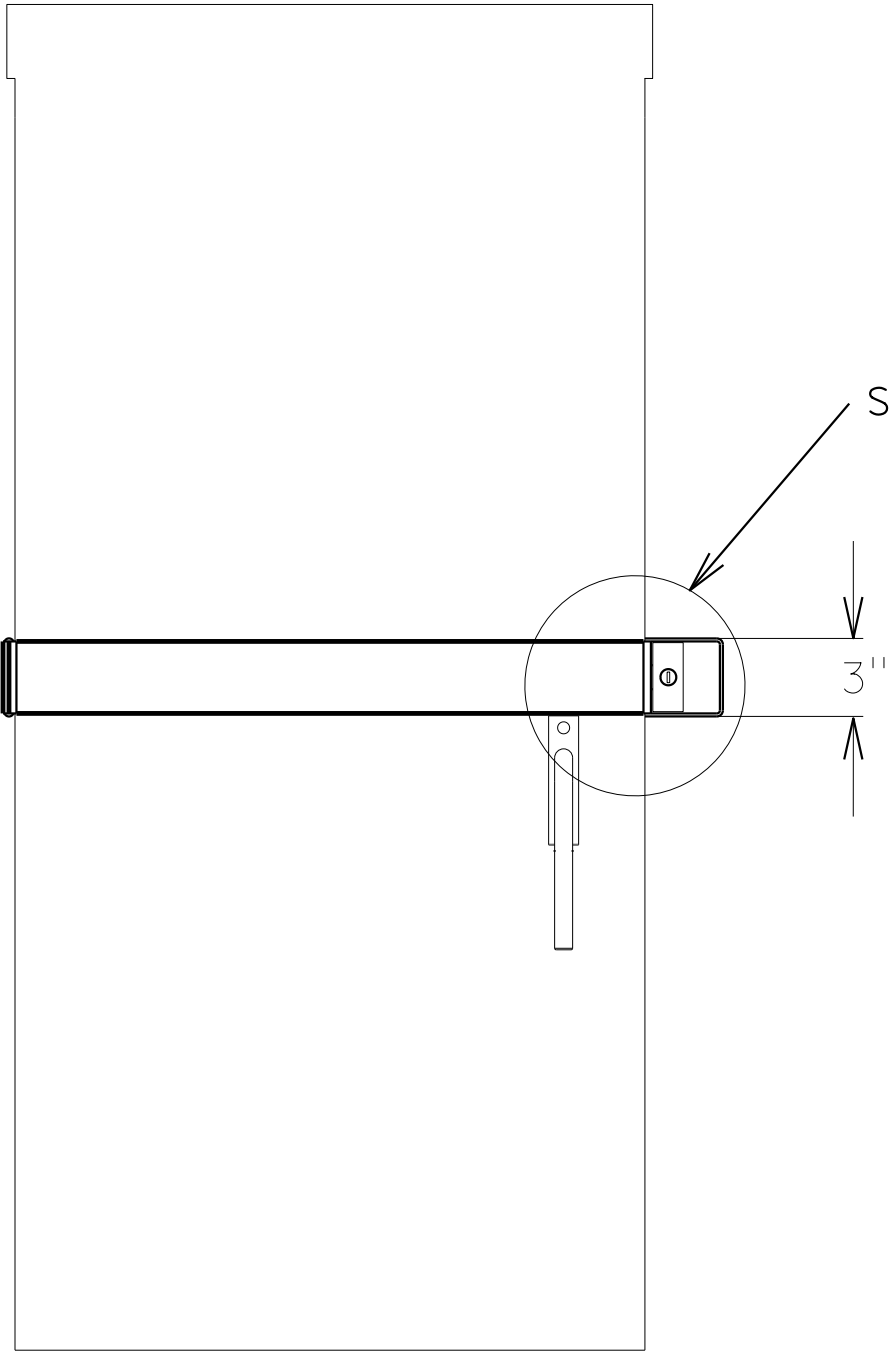
APPROVED FOR IRRIGATION WORK ONLY

NOTES (THIS SHEET ONLY):

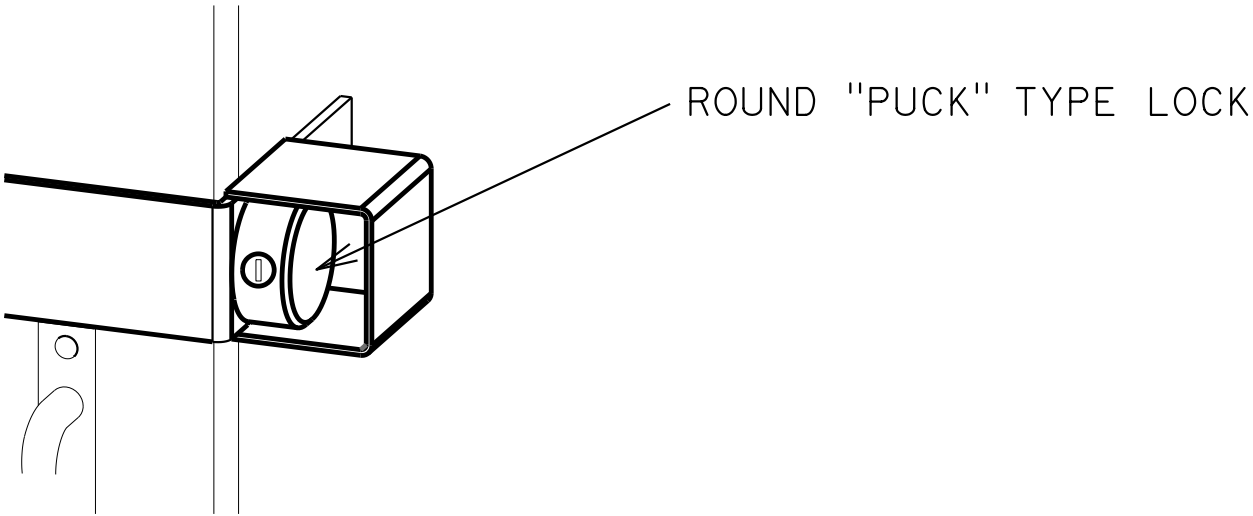
1. ROUND "HOCKEY PUCK" LOCK MUST BE KEYED TO CALTRANS STANDARD KEY.



SIDE VIEW



FRONT VIEW



DETAIL A

CABINET SECURITY HASP
FOR EXISTING AND NEW
IRRIGATION CONTROL CABINET

IRRIGATION DETAILS

ID-1

Dist	COUNTY	ROUTE	POST MILES TOTAL PROJECT	SHEET No.	TOTAL SHEETS
08	Riv	15	20.5/21.5	15	26

Kim S. Rhodes
LICENSED LANDSCAPE ARCHITECT

LICENSED LANDSCAPE ARCHITECT

KIM S. RHODES
3867

Kim S. Rhodes
Signature
09/30/2024
Renewal Date
12/18/2023
Date

STATE OF CALIFORNIA

PLANS APPROVAL DATE

THE STATE OF CALIFORNIA OR ITS OFFICERS
OR AGENTS SHALL NOT BE RESPONSIBLE FOR
THE ACCURACY OR COMPLETENESS OF SCANNED
COPIES OF THIS PLAN SHEET.

DAVID EVANS AND ASSOCIATES, INC.
4141 E. INLAND EMPIRE BL.
SUITE 250
ONTARIO, CA 91764

CITY OF LAKE ELSINORE
130 SOUTH MAIN STREET
LAKE ELSINORE, CA 92530

IRRIGATION QUANTITY (LATERAL SUPPLY SIDE OF CONTROL VALVE)


CONTOLLER LETTER	VALVE NUMBER	PLASTIC PIPE (SCHEDULE 40) (SUPPLY LINE)						CHECK VALVE	SPRINKLER ASSEMBLY				
									TREE WELL	RISER (GEAR DRIVEN)	POP-UP (GEAR DRIVEN)	RISER	POP-UP
									EA	EA	EA	EA	EA
		¾" LF	1" LF	1¼" LF	1½" LF	2" LF	2½" LF		EA	EA	EA	EA	EA
A	1	550	10	-	-	-	-		24	-			
	2	400	10	-	-	-	-		16	-			
	3	160	80	160	160	-	360		-	15			
	4	160	80	160	-	500	-		-	8			
	5	200	80	80	160	80	-		-	11			
	6	240	120	300	-	-	-		-	14			
	7	520	80	60	-	-	-		40	-			
	8	320	-	-	-	-	-		32	-			
	9	510	40	60	-	-	-		28	-			
	10	610	40	-	-	-	-		41	-			
	11	480	60	-	-	-	-		24	-			
	12	160	80	40	-	480	-		-	9			
	13	200	80	40	-	140	-		-	10			
	14	220	60	40	240	-	-		-	10			
	15	160	80	40	-	470	-		-	8			
	16	180	80	40	-	120	-		-	9			
	17	400	20	-	-	-	-		20	-			
	18	520	20	-	-	-	-		35	-			
	19	240	80	200	80	-	240		-	16			
	20	150	240	-	-	-	-		-	7			
	21	320	80	160	-	180	-		-	16			
	22	420	10	-	-	-	-		20	-			
	23	800	-	40	-	-	-		32	-			
	24	200	80	80	240	-	-		-	8			
	25	160	120	-	-	-	-		-	6			
	26	160	80	40	120	-	-		-	7			
	27												
	28												
	29												
	30												
SUBTOTAL A		8,440	1,710	1,540	1,000	1,970	600		312	154			


CONTOLLER LETTER	VALVE NUMBER	PLASTIC PIPE (SCHEDULE 40) (SUPPLY LINE)						CHECK VALVE	SPRINKLER ASSEMBLY				
									TREE WELL	RISER (GEAR DRIVEN)	POP-UP (GEAR DRIVEN)	RISER	POP-UP
									EA	EA	EA	EA	EA
		¾" LF	1" LF	1¼" LF	1½" LF	2" LF	2½" LF		EA	EA	EA	EA	EA
B	1	680	-	-	-	-	-		24	-			
	2	200	80	160	-	240	-		-	12			
	3	160	80	160	40	320	-		-	16			
	4	880	80	20	-	-	-		34	-			
	5	700	80	40	-	-	-		28	-			
	6	820	80	240	-	-	-		30	-			
	7	520	80	40	-	-	-		67	-			
	8	560	160	-	-	-	-		20	-			
	9	820	80	120	-	-	-		36	-			
	10	160	80	80	40	260	-		-	9			
	11	160	40	40	320	-	-		-	8			
	12	160	80	60	-	-	-		-	5			
	13	240	80	40	40	180	-		-	9			
	14	160	80	40	-	400	-		-	8			
	15	160	80	40	40	520	-		-	9			
	16	160	80	80	-	180	-		-	9			
	17	600	40	30	-	-	-		22	-			
	18	740	40	-	-	-	-		44	-			
	19	450	80	-	-	-	-		18	-			
	20	160	80	80	200	-	320		-	14			
	21	160	80	80	120	-	300		-	14			
	22	680	40	30	-	-	-		24	-			
	23	610	-	-	-	-	-		27	-			
	24	160	80	80	200	-	260		-	14			
	25	240	120	280	-	-	-		-	14			
	26	200	80	40	40	380	-		-	9			
	27	160	80	40	120	-	-		-	8			
	28	580	100	-	-	-	-		18				
	29												
	30												
SUBTOTAL B		11,280	1,940	1,820	1,160	2,480	880		392	158			
SUBTOTAL A		8,440	1,710	1,540	1,000	1,970	600		312	154			
TOTAL		19,720	3,650	3,360	2,160	4,450	1,480		704	312			

IRRIGATION QUANTITIES

IQ-1

Dist	COUNTY	ROUTE	POST MILES TOTAL PROJECT	SHEET No.	TOTAL SHEETS
08	Riv	15	20.5/21.5	17	26


LICENSED LANDSCAPE ARCHITECT



PLANS APPROVAL DATE

THE STATE OF CALIFORNIA OR ITS OFFICERS
OR AGENTS SHALL NOT BE RESPONSIBLE FOR
THE ACCURACY OR COMPLETENESS OF SCANNED
COPIES OF THIS PLAN SHEET.

DAVID EVANS AND ASSOCIATES, INC.
4141 E. INLAND EMPIRE BL.
SUITE 250
ONTARIO, CA 91764

CITY OF LAKE ELSINORE
130 SOUTH MAIN STREET
LAKE ELSINORE, CA 92530

IRRIGATION QUANTITY (MAIN SUPPLY SIDE OF CONTROL VALVE)

SHEET No.	IRRIGATION CONTROLLER	BACKFLOW PREVENTER ASSEMBLY	FLOW SENSOR	WYE STRAINER ASSEMBLY	BOOSTER PUMP	PRESSURE REGULATING VALVE	REMOTE CONTROL VALVE			ELECTRIC REMOTE CONTROL VALVE (MASTER)	BALL VALVE	GATE VALVE	(SUPPLY LINE)
	24-32 STATION (WALL MOUNTED)												
	EA	EA	EA	EA	EA	EA	EA	EA	EA	EA	EA	LF	
IP-1	-	-	-	-	-	-	-	-	-	-	-	-	-
IP-2	2	2	2	2	2	-	20	12	4	2	12	9	3,600
IP-3	-	-	-	-	-	-	2	14	2	-	4	-	780
TOTAL	2	2	2	2	2	-	22	26	6	2	16	9	4,380

IRRIGATION QUANTITIES

SECTION A: HYDROZONE INFORMATION TABLE

California Water Efficient Landscape Worksheet - POC#1							
Reference Evapotranspiration (ET _o)		58.92	Project Type		Non-Residential		0.45
Hydrozone # / Planting Description ^a	Plant Factor (PF)	Irrigation Method ^b	Irrigation Efficiency (IE) ^c	ETAF (PF/IE)	Landscape Area (Sq. Ft.)	ETAF x Area	Estimated Total Water Use (ETWU) ^d
Regular Landscape Areas							
Mod water shrubs	0.5	Bubbler	0.81	0.62	0.00	0.00	0.00
Low water shrubs	0.2	Bubbler	0.81	0.25	0.00	0.00	0.00
Mod water trees	0.5	Bubbler	0.81	0.62	0.00	0.00	0.00
Low water trees	0.2	Bubbler	0.81	0.25	0.00	0.00	0.00
Temporary Hydroseed	0.2	Overhead	0.75	0.27	0.00		
				Totals	0.00	0.00	0.00
Special Landscape Areas							
				1		0.00	0.00
				1		0.00	0.00
				1		0.00	0.00
				1		0.00	0.00
				Totals	0.00	0.00	0.00
					ETWU Total		0.00
		Maximum Allowed Water Allowance (MAWA) ^e					0.00
ETAF Calculations							
Regular Landscape Areas		<div>Average ETAF for Regular Landscape Areas must be 0.55 or below for residential areas, and 0.45 or below for non-residential areas.</div>					
Total ETAF x Area	0.00						
Total Area	0.00						
Average ETAF	#DIV/0!						
All Landscape Areas							
Total ETAF x Area	0.00						
Total Area	0.00						
Average ETAF	#DIV/0!						

California Water Efficient Landscape Worksheet - POC#2									
Reference Evapotranspiration (ET _o)		58.92		Project Type		Non-Residential		0.45	
Hydrozone # / Planting Description ^a	Plant Factor (PF)	Irrigation Method ^b	Irrigation Efficiency (IE) ^c	ETAF (PF/IE)	Landscape Area (Sq. Ft.)	ETAF x Area	Estimated Total Water Use (ETWU) ^d		
Regular Landscape Areas									
Mod water shrubs	0.5	Bubbler	0.81	0.62	0.00	0.00	0.00		
Low water shrubs	0.2	Bubbler	0.81	0.25	0.00	0.00	0.00		
Mod water trees	0.5	Bubbler	0.81	0.62	0.00	0.00	0.00		
Low water trees	0.2	Bubbler	0.81	0.25	0.00	0.00	0.00		
Non Irrig. hydroseed	0.2	Overhead	0.75	0.27	0.00	0.00	0.00		
				Totals	0.00	0.00	0.00		
Special Landscape Areas									
				1		0.00	0.00		
				1		0.00	0.00		
				1		0.00	0.00		
				1		0.00	0.00		
				Totals	0.00	0.00	0.00		
					ETWU Total				0.00
		Maximum Allowed Water Allowance (MAWA) ^e						0.00	
ETAF Calculations									
Regular Landscape Areas		Average ETAF for Regular Landscape Areas must be 0.55 or below for residential areas, and 0.45 or below for non-residential areas.							
Total ETAF x Area	0.00								
Total Area	0.0								
Average ETAF	#DIV/0!								
All Landscape Areas									
Total ETAF x Area	0.00								
Total Area	0.0								
Average ETAF	#DIV/0!								

I AGREE TO COMPLY WITH THE REQUIREMENTS OF THE MODEL WATER EFFICIENCY LANDSCAPE ORDINANCE AND SUBMIT A COMPLETE LANDSCAPE DOCUMENTATION PACKAGE

Signature _____ Name: _____

WATER EFFICIENT LANDSCAPE CALCULATION PLAN

WELCP -1

Dist

COUNTY

ROUTE

POST MILES
TOTAL PROJECT

SHEET
No.

TOTAL
SHEETS

08

Riv

15

20.5/21.5

18

26

Kim S. Rhodes

LICENSED LANDSCAPE ARCHITECT

PLANS APPROVAL DATE

THE STATE OF CALIFORNIA OR ITS OFFICERS OR AGENTS SHALL NOT BE RESPONSIBLE FOR THE ACCURACY OR COMPLETENESS OF SCANNED COPIES OF THIS PLAN SHEET.

DAVID EVANS AND ASSOCIATES, INC.
4141 E. INLAND EMPIRE BL.
SUITE 250
ONTARIO, CA 91764

CITY OF LAKE ELSINORE
130 SOUTH MAIN STREET
LAKE ELSINORE, CA 92530

LICENSED LANDSCAPE ARCHITECT

Kim S. Rhodes

3867

Signature
09/30/2024
Renewal Date
12/18/2023
Date

STATE OF CALIFORNIA

I AGREE TO COMPLY WITH THE REQUIREMENTS OF THE MODEL
WATER EFFICIENCY LANDSCAPE ORDINANCE AND SUBMIT A
COMPLETE LANDSCAPE DOCUMENTATION PACKAGE

Signature

Name:

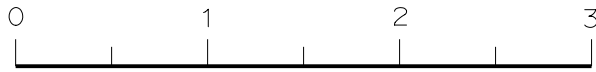
BORDER LAST REVISED 7/2/2010

```

USERNAME => Rmwe
DGN FILE => 1G7204sr004.dgn

```

RELATIVE BORDER SCALE
IS IN INCHES



UNIT 2272

PROJECT NUMBER & PHASE


08160000571

WATER EFFICIENT LANDSCAPE CALCULATION PLAN

WELCP-2

Dist	COUNTY	ROUTE	POST MILES TOTAL PROJECT	SHEET NO.	TOTAL SHEETS
08	Riv	15	20.5/21.5	19	26

Kim S. Rhodes
 LICENSED LANDSCAPE ARCHITECT



PLANS APPROVAL DATE

THE STATE OF CALIFORNIA OR ITS OFFICERS
 OR AGENTS SHALL NOT BE RESPONSIBLE FOR
 THE ACCURACY OR COMPLETENESS OF SCANNED
 COPIES OF THIS PLAN SHEET.

DAVID EVANS AND ASSOCIATES, INC.
 4141 E. INLAND EMPIRE BL.
 SUITE 250
 ONTARIO, CA 91764


CITY OF LAKE ELSINORE
 130 SOUTH MAIN STREET
 LAKE ELSINORE, CA 92530


CONTROLLER ID	VALVE NUMBER	HYDROZONE	WUCOLS	SPRINKLER TYPE	AREA (SQ.FT)	% OF LANDSCAPE AREA
A	1	SHRUB	LOW	BUBBLER	301	0.32%
A	2	TREE	MOD	BUBBLER	628	0.67%
A	3	SHRUB	LOW	ROTOR	6,675	7.08%
A	4	SHRUB	LOW	ROTOR	6,675	7.08%
A	5	SHRUB	LOW	ROTOR	6,675	7.08%
A	6	SHRUB	LOW	ROTOR	6,675	7.08%
A	7	TREE	LOW	BUBBLER	1,570	1.67%
A	8	SHRUB	LOW	BUBBLER	402	0.43%
A	9	TREE	MOD	BUBBLER	1,099	1.17%
A	10	SHRUB	LOW	BUBBLER	515	0.55%
A	11	TREE	MOD	BUBBLER	942	1.00%
A	12	SHRUB	LOW	ROTOR	5,866	6.22%
A	13	SHRUB	LOW	ROTOR	5,866	6.22%
A	14	SHRUB	LOW	ROTOR	5,866	6.22%
A	15	SHRUB	LOW	ROTOR	5,866	6.22%
A	16	SHRUB	LOW	ROTOR	5,866	6.22%
A	17	TREE	MOD	BUBBLER	785	0.83%
A	18	SHRUB	LOW	BUBBLER	440	0.47%
A	19	SHRUB	LOW	ROTOR	5,998	6.36%
A	20	SHRUB	LOW	ROTOR	5,998	6.36%
A	21	SHRUB	LOW	ROTOR	5,998	6.36%
A	22	SHRUB	LOW	BUBBLER	251	0.27%
A	23	TREE	MOD	BUBBLER	1,256	1.33%
A	24	SHRUB	LOW	ROTOR	4,014	4.26%
A	25	SHRUB	LOW	ROTOR	4,014	4.26%
A	26	SHRUB	LOW	ROTOR	4,014	4.26%
A	27					
A	28					
A	29					
A	30	NON IRRIGATED HYDROSEED				0.00%
SUBTOTAL					94,252	100.00%

CONTROLLER ID	VALVE NUMBER	HYDROZONE	WUCOLS	SPRINKLER TYPE	AREA (SQ.FT)	% OF LANDSCAPE AREA
B	1	SHRUB	LOW	BUBBLER	301	0.23%
B	2	SHRUB	LOW	ROTOR	10,748	8.04%
B	3	SHRUB	LOW	ROTOR	10,748	8.04%
B	4	TREE	MOD	BUBBLER	1,335	1.00%
B	5	TREE	MOD	BUBBLER	1,099	0.82%
B	6	TREE	MOD	BUBBLER	1,178	0.88%
B	7	SHRUB	LOW	BUBBLER	842	0.63%
B	8	SHRUB	LOW	BUBBLER	251	0.19%
B	9	TREE	MOD	BUBBLER	1,413	1.06%
B	10	SHRUB	LOW	ROTOR	8,317	6.22%
B	11	SHRUB	LOW	ROTOR	8,317	6.22%
B	12	SHRUB	LOW	ROTOR	8,317	6.22%
B	13	SHRUB	LOW	ROTOR	8,317	6.22%
B	14	SHRUB	LOW	ROTOR	8,317	6.22%
B	15	SHRUB	LOW	ROTOR	8,317	6.22%
B	16	SHRUB	LOW	ROTOR	8,317	6.22%
B	17	TREE	MOD	BUBBLER	864	0.65%
B	18	SHRUB	LOW	BUBBLER	553	0.41%
B	19	TREE	MOD	BUBBLER	707	0.53%
B	20	SHRUB	LOW	ROTOR	9,063	6.78%
B	21	SHRUB	LOW	ROTOR	9,063	6.78%
B	22	TREE	MOD	BUBBLER	942	0.70%
B	23	SHRUB	LOW	BUBBLER	339	0.25%
B	24	SHRUB	LOW	ROTOR	6,343	4.74%
B	25	SHRUB	LOW	ROTOR	6,343	4.74%
B	26	SHRUB	LOW	ROTOR	6,343	4.74%
B	27	SHRUB	LOW	ROTOR	6,343	4.74%
B	28	TREE	LOW	BUBBLER	707	0.53%
B	29					
B	30	NON IRRIGATED HYDROSEED				0.00%
SUBTOTAL					133,743	100.00%

HYDROZONE (CONTROLLER ID)	PLANT WATER USE TYPES	HYDROZONE AREA (SQFT)	PLANT FACTOR (PF)	HA*PF (SQFT)
A	LOW	89,542	0.20	17,908.42
	MOD	4,710	0.50	2,355.00
B	LOW	66,095	0.20	13,219.02
	MOD	28,157	0.50	14,078.52
SUBTOTAL		188,504		47,561

Dist	COUNTY	ROUTE	POST MILES TOTAL PROJECT	SHEET No.	TOTAL SHEETS
08	Riv	15	20.5/21.5	20	26


LICENSED LANDSCAPE ARCHITECT



PLANS APPROVAL DATE

THE STATE OF CALIFORNIA OR ITS OFFICERS
OR AGENTS SHALL NOT BE RESPONSIBLE FOR
THE ACCURACY OR COMPLETENESS OF SCANNED
COPIES OF THIS PLAN SHEET.

DAVID EVANS AND ASSOCIATES, INC.
4141 E. INLAND EMPIRE BL.
SUITE 250
ONTARIO, CA 91764

CITY OF LAKE ELSINORE
130 SOUTH MAIN STREET
LAKE ELSINORE, CA 92530

Pressure Loss Calculation					
Client Name:	CITY OF LAKE ELSINORE				
Project Name:	I-15 AND MAIN STREET				
Water Meter / POC No.:	POC #1 - CONTROLLER 'A'				
Domestic / Recycled:	DOMESTIC				
POC Elevation:	1,310 ft.				
Static Pressure:	89 psi				
Water Source & Phone #:	EVMWD - (951) 674-3146 FIRE FLOW TEST				
Date:	September 11, 2023				
Valve Station No.:	A-24				
Valve Flow Rate:	28.0 gpm				
Highest Elevation Served:	1,334 ft.				
Equipment	Size	Flow	Length / Qty.	PSI Loss	
Water Meter	2 in.	75.0 gpm	N/A	4.3 psi	
Backflow Preventer	2 in.	75.0 gpm	N/A	12.0 psi	
Mainline (PVC)	3 in.	75.0 gpm	1,230 ft.	7.6 psi	
Master Valve	2 in.	75.0 gpm	N/A	1.6 psi	
Flow Meter	2 in.	75.0 gpm	N/A	0.0 psi	
Gate Valve	3 in.	75.0 gpm	5	5.0 psi	
Remote Control Valve	1 1/2 in.	28.0 gpm	N/A	3.9 psi	
Lateral Line	VARIES	VARIES	VARIES	4.0 psi	
Fittings (Estimate10%)	N/A	N/A	N/A	3.8 psi	
Elevation Change				10.4 psi	
Pressure Req. to Operate Heads				45.0 psi	
Total Pressure Required				97.7 psi	
Booster Pump				20.0 psi	
Available Residual Pressure				11.3 psi	

Pressure Loss Calculation					
Client Name:	CITY OF LAKE ELSINORE				
Project Name:	I-15 AND MAIN STREET				
Water Meter / POC No.:	POC #2 - CONTROLLER 'B'				
Domestic / Recycled:	DOMESTIC				
POC Elevation:	1,310 ft.				
Static Pressure:	89 psi				
Water Source & Phone #:	EVMWD - (951) 674-3146 FIRE FLOW TEST				
Date:	September 11, 2023				
Valve Station No.:	B-24				
Valve Flow Rate:	52.0 gpm				
Highest Elevation Served:	1,388 ft.				
Equipment	Size	Flow	Length / Qty.	PSI Loss	
Water Meter	2 in.	75.0 gpm	N/A	4.3 psi	
Backflow Preventer	2 in.	75.0 gpm	N/A	12.0 psi	
Mainline (PVC)	3 in.	75.0 gpm	1,010 ft.	6.3 psi	
Master Valve	2 in.	75.0 gpm	N/A	1.6 psi	
Flow Meter	2 in.	75.0 gpm	N/A	0.0 psi	
Gate Valve	3 in.	75.0 gpm	4	4.0 psi	
Remote Control Valve	2 in.	52.0 gpm	N/A	4.8 psi	
Lateral Line	VARIES	VARIES	VARIES	4.0 psi	
Fittings (Estimate10%)	N/A	N/A	N/A	3.7 psi	
Elevation Change				33.8 psi	
Pressure Req. to Operate Heads				45.0 psi	
Total Pressure Required				119.4 psi	
Booster Pump				40.0 psi	
Available Residual Pressure				9.6 psi	

I AGREE TO COMPLY WITH THE REQUIREMENTS OF THE MODEL
WATER EFFICIENCY LANDSCAPE ORDINANCE AND SUBMIT A
COMPLETE LANDSCAPE DOCUMENTATION PACKAGE

Signature _____ Name: _____

WATER EFFICIENT LANDSCAPE CALCULATION PLAN

WELCP-3

1. IRRIGATION SCHEDULE BASED ON 8-HOUR WATERING WINDOW 7-DAYS PER WEEK.
2. INCREASE RUN TIME BY 40% AND DAYS PER WEEK BY 1 DURING PLANT ESTABLISHMENT PERIOD.
3. IRRIGATION SYSTEM OPERATION MAY BE ADJUSTED TO ENSURE ADEQUATE WATER IS APPLIED TO MAINTAIN PLANTING, IF APPROVED IN WRITING BY THE ENGINEER.
4. OPERATION DURATION IS BASED ON MULTIPLE VALVES RUNNING AT THE SAME TIME (UP TO 4 VALVES)

**WATER EFFICIENT LANDSCAPE
CALCULATION PLAN
WELCP-4**

- NOTE:**
- UNDERLINED PORTIONS OF BOTANICAL NAME INDICATE ABBREVIATION USED ON PLANTING PLAN.
 - CONTRACTOR TO PROVIDE AGRONOMIC SOILS ANALYSIS AFTER ROUGH GRADING AND ADJUST PLANTING REQUIREMENTS APPROPRIATELY PER UPDATED SOIL ANALYSIS. CONTRACTOR TO ALSO PROVIDE AGRONOMIC SOIL ANALYSIS SPECIFICALLY FOR THE BIOSWALES. PROVIDE PROPOSED PLANTING DESIGN AND IRRIGATION TYPE IN BIOSWALES TO THE SOIL LAB FOR FOR ACCURATE RECOMMENDATIONS.
 - SEE STANDARD SPECIFICATIONS FOR ADDITIONAL PLANTING INFORMATION

PLANT LEGEND

PLANT GROUP (SIZE)	PLANT No.	SYMBOL	BOTANICAL NAME	COMMON NAME	WUCOL	HOLE SIZE		BASIN TYPE	MULCH ⑤	APPLICATION RATES		STAKING	MINIMUM PLANTING DISTANCE FROM:							REMARKS
						DIAMETER	DEPTH			① SOIL AMENDMENT	PACKET FERTILIZER		ON CENTER SPACING	ETW	EP	FENCE	WALL	PAVED DITCH	EARTH DITCH	
						CF	CF		EA	ft	ft		ft	ft	ft	ft	ft			
B (No. 5)	1	☞	AGAVE 'BLUE GLOW'	BLUE GLOW AGAVE	Low	③	②	II	-	1.3	1	-	④	-	6	6	6	6	6	ACCENT
	2	⊕	BOUGAINVILLEA 'ROSENKA'	ROSENKA BOUGAINVILLEA	Low	③	②	II	-	1.3	1	-	④	-	6	6	6	6	6	ACCENT
	3	⊖	CISTUS X PULVERULENTUS 'SUNSET'	MAGENTA ROCKROSE	Low	③	②	II	-	1.3	1	-	④	-	6	6	6	6	6	ACCENT
	4	⊙	ENCELIA FARINOSA	BRITTLEBUSH	Low	③	②	II	-	1.3	1	-	④	-	5	5	5	5	7	ACCENT
	5	⬆	ERIOGONUM FASCICULATUM 'DANA POINT'	CALIFORNIA BUCKWHEAT	Low	③	②	II	-	1.3	1	-	④	-	6	6	6	6	6	ACCENT
	6	⦿	HESPERALOE PARVIFLORA	RED YUCCA	Low	③	②	II	-	1.3	1	-	④	-	6	6	6	6	6	ACCENT
	7	⬡	LEUCOPHYLLUM CANDIDUM 'THUNDER CLOUD'	TEXAS RANGER	Low	③	②	II	-	1.3	1	-	④	-	3	3	3	3	3	ACCENT
	8	⬢	SPHAERALCEA AMBIGUA	DESERT GLOBEMALLOW	Low	③	②	II	-	1.3	1	-	④	-	6	6	6	6	6	ACCENT
K (24" BOX)	9	⚙	CALOCEDRUS DECURRENS	INCENSE CEDAR	Mod	③	②	II	5	1.75	5	⑥	④	40	-	30	30	30	32	TREE
	10	⚙	CHILOPSIS LINEARIS	DESERT WILLOW	Low	③	②	II	5	1.75	5	⑥	④	30	-	15	15	15	17	TREE
	11	⌚	LAGERSTROEMIA INDICA 'WATERMELON RED'	WATERMELON RED CRAPE MYRTLE	Mod	③	②	II	5	2.5	5	⑥	④	30	-	15	15	15	17	MULTI-TRUNK TREE
	12	◯	PARKINSONIA 'DESERT MUSEUM'	DESERT MUSEUM PALO VERDE	Low	③	②	II	5	1.75	5	⑥	④	30	-	15	15	10	12	TREE
	13	⦿	PISTACHIA CHINENSIS	CHINESE PISTACHE	Mod	③	②	II	5	1.75	5	⑥	④	30	-	15	15	15	17	TREE
	14	⬡	PROSOPIS GLANDULOSA 'AZT'	THORNLESS HONEY MESQUITE	Low	③	②	II	8	1.75	5	⑥	④	30	-	13	15	13	13	TREE
	15	⦿	QUERCUS OBLONGIFOLIA	MEXICAN BLUE OAK	Low	③	②	II	8	1.75	5	⑥	④	30	-	20	15	15	17	TREE

- PLANT LEGEND NOTES:
- ① - QUANTITIES SHOWN ARE "PER PLANT" UNLESS SHOWN AS SQFT OR SQYD APPLICATION RATES
 - ② - HOLE SIZE DEPTH TO BE SUFFICIENT TO RECEIVE ROOT BALL
 - ③ - HOLE SIZE DIAMETER TO BE 2X ROOTBALL WIDTH
 - ④ - AS SHOWN ON PROJECT PLANS
 - ⑤ - BASIN MULCH IS INCLUDED WITH MULCH QUANTITIES SHOWN ON MATERIALS CHART
 - ⑥ - REQUIRED PER STANDARD PLAN H3, SEE PROJECT PLANS

APPROVED FOR PLANTING WORK ONLY

PLANT LEGEND

NO SCALE

PL-1

Dist

COUNTY

ROUTE

POST MILES
TOTAL PROJECT

SHEET
No.

TOTAL
SHEETS

08

Riv

15

20.5/21.5

22

26

Kim S. Rhodes

LICENSED LANDSCAPE ARCHITECT

Kim S. Rhodes

Signature

09/30/2024

Renewal Date

12/18/2023

Date

LICENSED LANDSCAPE ARCHITECT

3867

STATE OF CALIFORNIA

PLANS APPROVAL DATE

THE STATE OF CALIFORNIA OR ITS OFFICERS OR AGENTS SHALL NOT BE RESPONSIBLE FOR THE ACCURACY OR COMPLETENESS OF SCANNED COPIES OF THIS PLAN SHEET.

DAVID EVANS AND ASSOCIATES, INC.
4141 E. INLAND EMPIRE BL.
SUITE 250
ONTARIO, CA 91764

CITY OF LAKE ELSINORE
130 SOUTH MAIN STREET
LAKE ELSINORE, CA 92530

LAST REVISION
00-00-00
DATE PLOTTED => 19-DEC-2023
TIME PLOTTED => 08:39

NOTE:
FOR ACCURATE RIGHT OF WAY DATA, CONTACT
RIGHT OF WAY ENGINEERING AT THE DISTRICT OFFICE.

Dist	COUNTY	ROUTE	POST MILES TOTAL PROJECT	SHEET No.	TOTAL SHEETS
08	Riv	15	20.5/21.5	23	26

Kim S. Rhodes

LICENSED LANDSCAPE ARCHITECT

PLANS APPROVAL DATE

THE STATE OF CALIFORNIA OR ITS OFFICERS
OR AGENTS SHALL NOT BE RESPONSIBLE FOR
THE ACCURACY OR COMPLETENESS OF SCANNED
COPIES OF THIS PLAN SHEET.

DAVID EVANS AND ASSOCIATES, INC.
4141 E. INLAND EMPIRE BL.
SUITE 250
ONTARIO, CA 91764

CITY OF LAKE ELSINORE
130 SOUTH MAIN STREET
LAKE ELSINORE, CA 92530

LICENSED LANDSCAPE ARCHITECT

Kim S. Rhodes

Signature

09/30/2024

Renewal Date

12/18/2023

Date

STATE OF CALIFORNIA

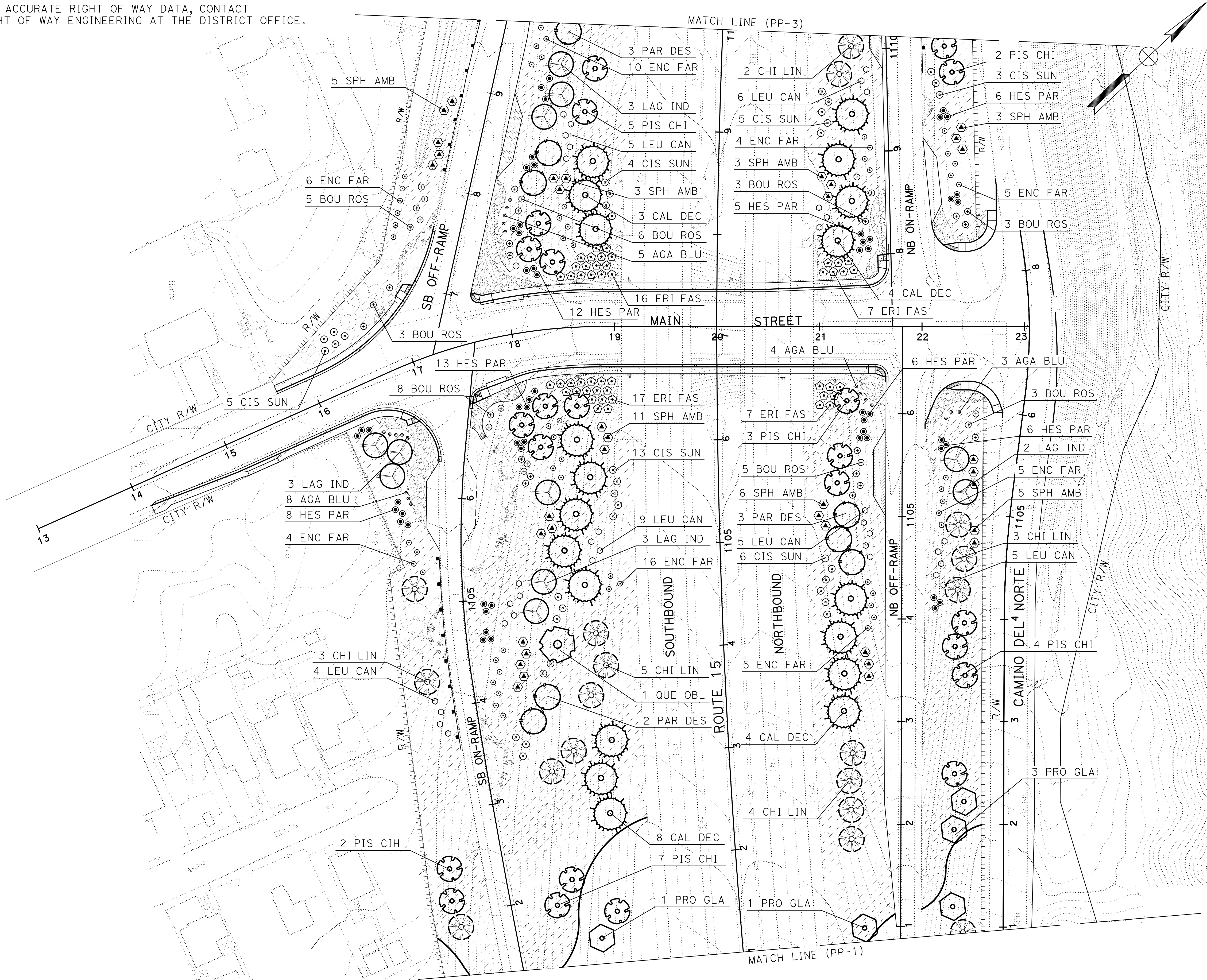


PLANTING PLAN

SCALE: 1" = 50'

PP-1

NOTE:
FOR ACCURATE RIGHT OF WAY DATA, CONTACT
RIGHT OF WAY ENGINEERING AT THE DISTRICT OFFICE.



Dist	COUNTY	ROUTE	POST MILES TOTAL PROJECT	SHEET No.	TOTAL SHEETS
08	Riv	15	20.5/21.5	24	26

Kim S. Rhodes
LICENSED LANDSCAPE ARCHITECT

LICENSED LANDSCAPE ARCHITECT

Kim S. Rhodes
Signature
09/30/2024
Renewal Date
12/18/2023
State
STATE OF CALIFORNIA

PLANS APPROVAL DATE

THE STATE OF CALIFORNIA OR ITS OFFICERS
OR AGENTS SHALL NOT BE RESPONSIBLE FOR
THE ACCURACY OR COMPLETENESS OF SCANNED
COPIES OF THIS PLAN SHEET.

DAVID EVANS AND ASSOCIATES, INC. 4141 E. INLAND EMPIRE BL. SUITE 250 ONTARIO, CA 91764	CITY OF LAKE ELSINORE 130 SOUTH MAIN STREET LAKE ELSINORE, CA 92530
---	---

PLANTING PLAN

SCALE: 1" = 50'

PP-2

Dist	COUNTY	ROUTE	POST MILES TOTAL PROJECT	SHEET No.	TOTAL SHEETS
08	Riv	15	20.5/21.5	25	26

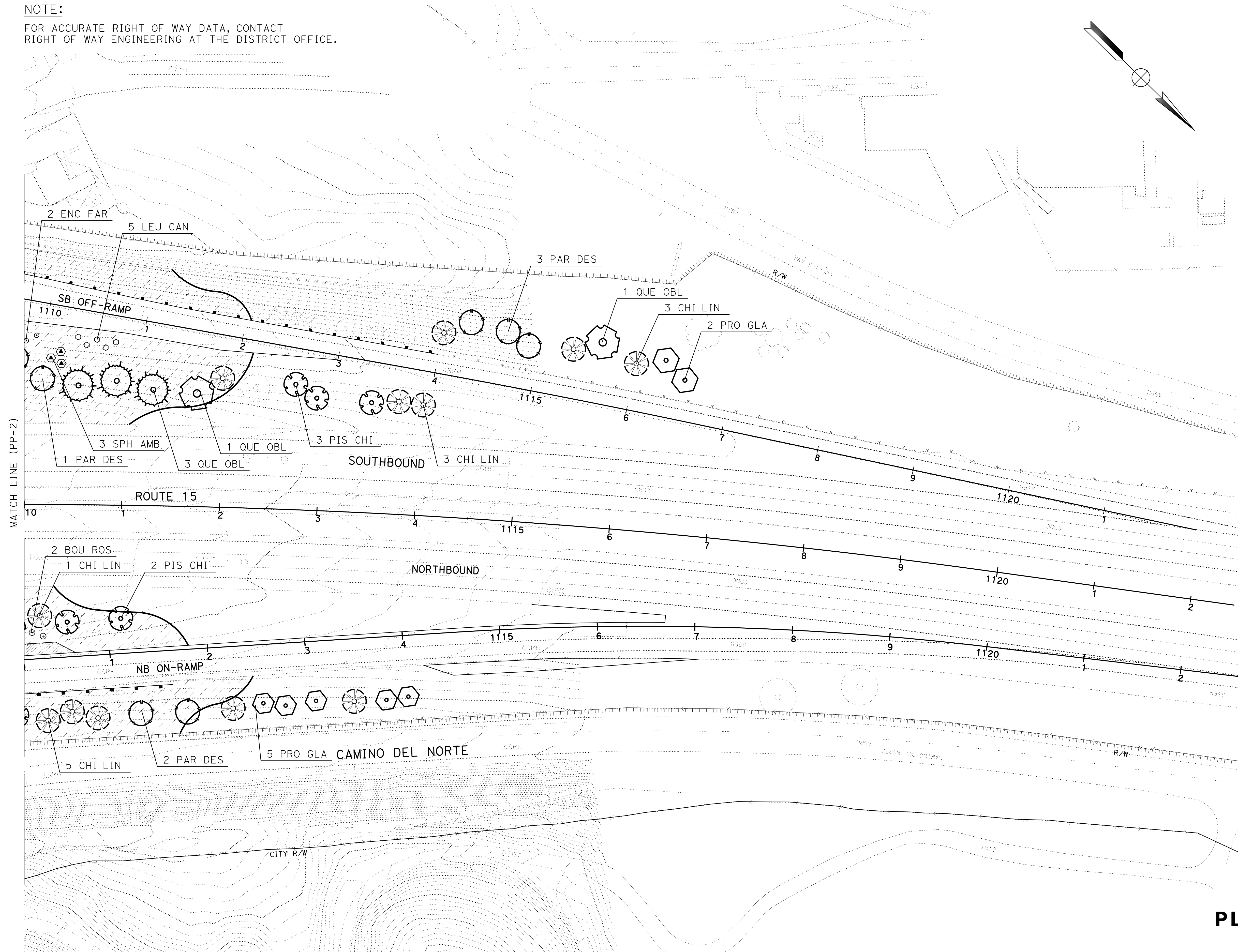
Kim S. Rhodes
LICENSED LANDSCAPE ARCHITECT



DAVID EVANS AND ASSOCIATES, INC. 4141 E. INLAND EMPIRE BL. SUITE 250 ONTARIO, CA 91764	CITY OF LAKE ELSINORE 130 SOUTH MAIN STREET LAKE ELSINORE, CA 92530
---	---

NOTE :

FOR ACCURATE RIGHT OF WAY DATA, CONTACT
RIGHT OF WAY ENGINEERING AT THE DISTRICT OFFICE.



PLANTING PLAN

SCALE: 1" = 50'

PP-3

BORDER LAST REVISED 7/2/2010

```

USERNAME => Rmwe
DGN FILE => 1G7204su003.dgn

```

RELATIVE BORDER SCALE
IS IN INCHES



UNIT 2272

PROJECT NUMBER & PHASE

08160000571

DATE PLOTTED => 19-DEC-2023
TIME PLOTTED => 08:47

NOTE:

- UNDERLINED PORTIONS OF BOTANICAL NAME INDICATE ABBREVIATION USED ON PLANTING PLAN.
- CONTRACTOR TO PROVIDE AGRONOMIC SOILS ANALYSIS AFTER ROUGH GRADING AND ADJUST PLANTING REQUIREMENTS APPROPRIATELY PER UPDATED SOIL ANALYSIS. CONTRACTOR TO ALSO PROVIDE AGRONOMIC SOIL ANALYSIS SPECIFICALLY FOR THE BIOSWALES. PROVIDE PROPOSED PLANTING DESIGN AND IRRIGATION TYPE IN BIOSWALES TO THE SOIL LAB FOR FOR ACCURATE RECOMENDATIONS.
- SEE STANDARD SPECIFICATIONS FOR ADDITIONAL PLANTING INFORMATION

PLANT QUANTITIES

BOTANICAL NAME	COMMON NAME	PLANT GROUP		PLANT BASIN	
		B	K	PACKET FERTILIZER	SOIL AMENDMENT
		EA	EA	EA	CY
AGAVE 'BLUE GLOW'	BLUE GLOW AGAVE	17	-	17	1
BOUGAINVILLEA 'ROSENKA'	ROSENKA BOUGAINVILLEA	38	-	38	2
CISTUS X PULVERULENTUS 'SUNSET'	MAGENTA ROCKROSE	36	-	36	2
ENCELIA FARINOSA	BRITTLBUSH	57	-	57	3
ERIOGONUM FASCICULATUM 'DANA POINT'	CALIFORNIA BUCKWHEAT	47	-	47	2
HESPERALOE PARVIFLORA	RED YUCCA	56	-	56	3
LEUCOPHYLLUM CANDIDUM 'THUNDER CLOUD'	TEXAS RANGER	38	-	38	2
SPHAERALCEA AMBIGUA	DESERT GLOBEMALLOW	42	-	42	2
CALOCEDRUS DECURRENS	INCENSE CEDAR	-	22	110	3
CHILOPSIS LINEARIS	DESERT WILLOW	-	40	200	4
LAGERSTROEMIA INDICA 'WATERMELON RED'	WATERMELON RED CRAPE MYRTLE	-	11	55	2
PARKINSONIA 'DESERT MUSEUM'	CANARY ISLAND PINE	-	17	85	2
PISTACHIA CHINENSIS	CHINESE PISTACHE	-	29	145	3
PROSOPIS GLANDULOSA 'AZT'	THORNLESS HONEY MESQUITE	-	25	125	3
QUERCUS OBLONGIFOLIA	MEXICAN BLUE OAK	-	3	15	1
SUBTOTAL		331	147	1,066	35
TOTAL		331	147	1,066	35

PLANTING QUANTITIES

PQ-1