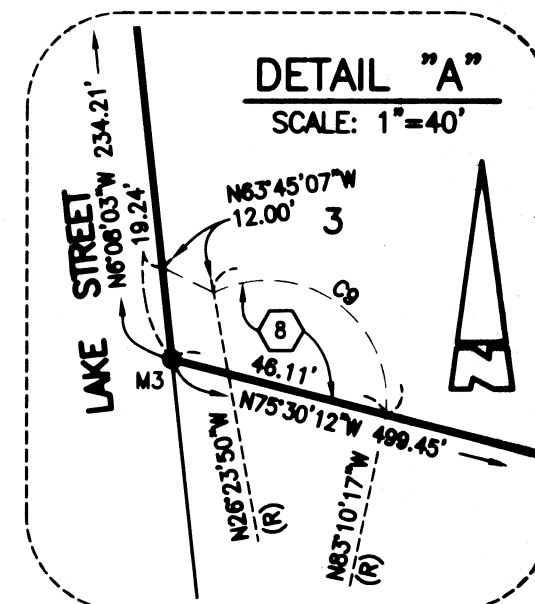


PARCEL MAP NO. 37550

BEING A SUBDIVISION OF A PORTION OF PARCEL 2 AS SHOWN ON CERTIFICATE OF COMPLIANCE RECORDED DECEMBER 23, 1997, AS INSTRUMENT NO. 97-470236, OF OFFICIAL RECORDS IN THE OFFICE OF THE COUNTY RECORDER OF THE COUNTY OF RIVERSIDE, STATE OF CALIFORNIA WITHIN SECTION 15, TOWNSHIP 5 SOUTH, RANGE 4 WEST, SAN BERNARDINO BASE AND MERIDIAN.

KWC ENGINEERS

APRIL 2021

**SURVEYOR'S NOTES:**

- INDICATES SET 1" I.P., TAGGED L.S. 9029, FLUSH, OR NAIL AND TAG, STAMPED L.S. 9029, IN CONCRETE UNLESS OTHERWISE NOTED
- INDICATES FOUND MONUMENT AS INDICATED.
- () INDICATES RECORD DATA PER R.S. 157/55, (UNLESS OTHERWISE NOTED).
- ||||| INDICATES RESTRICTED ACCESS RIGHTS

MONUMENT NOTES:

- M1 FD. 2" IP CAL DOT DN. 0.1" STAMPED (1981) "C/L N.F.R. - C/L LAKE ST. P.I." PER CALTRANS MON. MAP 204/0972 SHOWN AS STA 36+00.00 POT C/L LAKE ST.
- M2 FD. 1" IP CAL DOT FLUSH, STAMPED (1981) "C/L T.C.R. - C/L LAKE ST. P.I." PER CALTRANS MON. MAP 204/0973 SHOWN AS STA 18+33.11 P.O.T. C/L LAKE ST.
- M3 FD. 1" I.P. W/ PLASTIC PLUG STAMPED LS 5933, FLUSH PER R.S. 157/55.
- M4 FD. 1" I.P. W/ PLASTIC PLUG STAMPED LS 5933, UP 0.5', PER R.S. 157/55.
- M5 FD. NAIL AND BRASS TAG STAMPED LS 5933, IN BOULDER IN LIEU OF 1" I.P. W/ PLASTIC PLUG STAMPED LS 5933 PER R.S. 157/55.

CURVE DATA			
CURVE	DELTA	RADIUS	LENGTH
C1	286°15'37"	50.00'	249.81'
C2	53°07'48"	25.00'	23.18'
C3	06°02'52"	50.00'	5.54'
C4	94°02'27"	50.00'	82.07'
C5	71°35'46"	50.00'	62.48'
C6	114°16'31"	50.00'	99.72'
C7	53°07'48"	25.00'	23.18'
C8	102°08'11"	55.00'	98.04'
C9	123°13'32"	25.00'	53.77'

LINE DATA		
LINE	BEARING	LENGTH
L1	N83°35'48"E (R)	16.20'
L2	N05°44'00"E	57.57'
L3	N71°37'10"W	238.58'
L4	N83°14'15"W	56.58'
L5	N80°53'01"E	54.97'
L6	N70°49'09"W	64.84'
L7	N18°51'39"W	116.73'
L8	N45°45'30"W	40.31'
L9	N67°31'55"W (R)	25.17'
L10	N06°24'17"W	157.46'
L11	N40°51'19"E (R)	38.09'
L12	N83°35'48"E	61.49'
L13	N84°02'54"W	37.39'

NOTE:

SEE SHEET NO. 2 FOR GPS TIE AND EASEMENT NOTES

