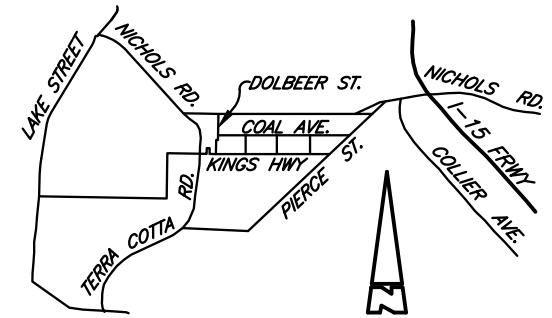
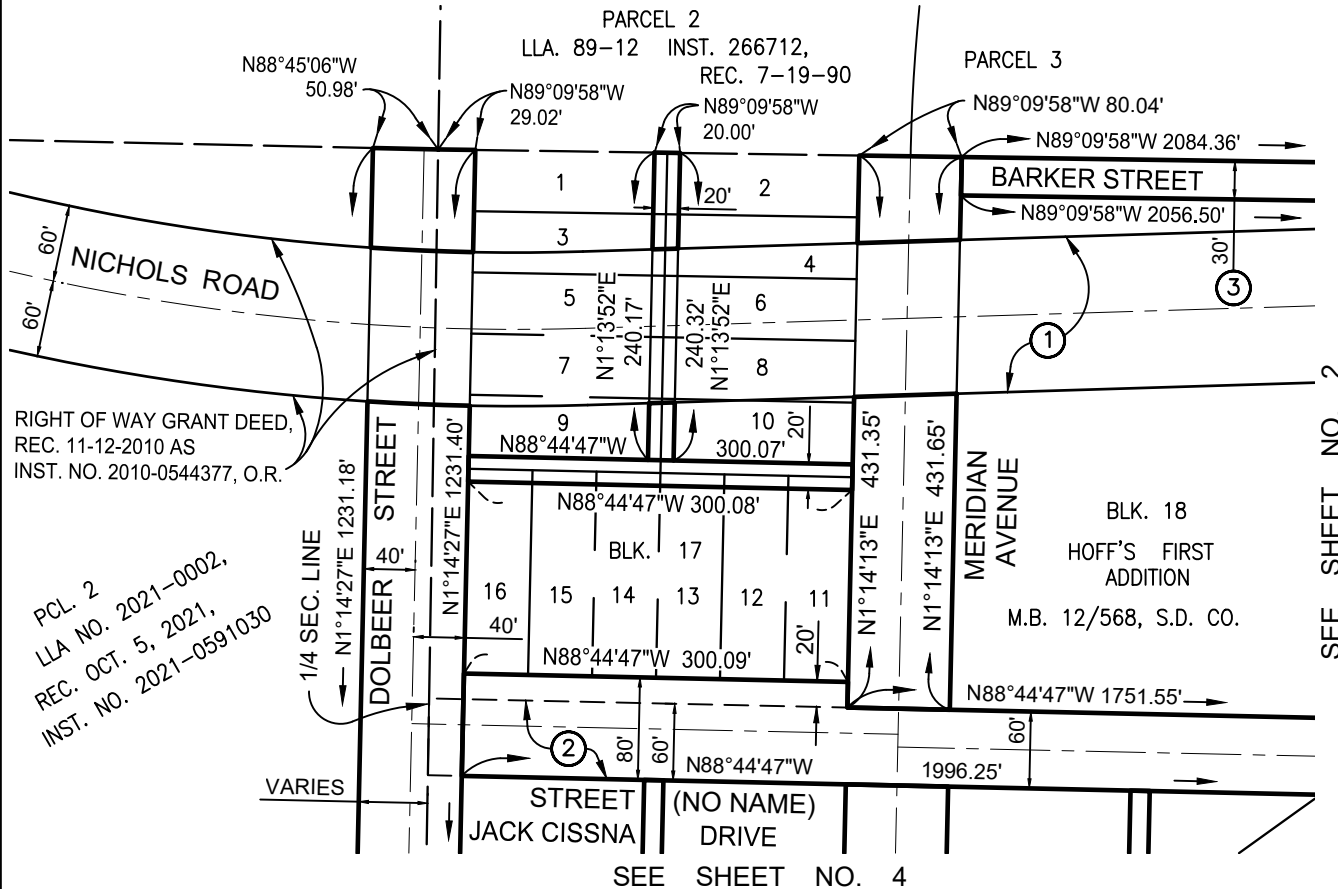


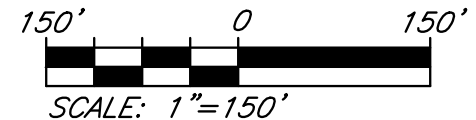
EXHIBIT "B" VACATION OF PUBLIC RIGHT OF WAY AND PUBLIC UTILITY EASEMENTS (PLAT MAP)

SHEET 1 OF 6 SHEETS



LEGEND:

	EXISTING PARCEL LINE
	CENTERLINE
	LIMITS OF VACATION



- ① AN EASEMENT IN FAVOR OF THE CITY OF LAKE ELSINORE, A MUNICIPAL CORPORATION FOR STREET AND PUBLIC UTILITY AND DRAINAGE PURPOSES, RECORDED DECEMBER 14, 2011 AS INSTRUMENT NO. 2011-0553628 OF OFFICIAL RECORDS.
- ② AN IRREVOCABLE OFFER OF DEDICATION OF AN EASEMENT FOR PUBLIC ROAD PURPOSES INCLUDING PUBLIC UTILITY AND PUBLIC SERVICE USES (JACK CISSNA DRIVE), RECORDED MARCH 5, 1976 AS INSTRUMENT NO. 1976-0029551 OF OFFICIAL RECORDS.
- ③ AN IRREVOCABLE OFFER OF DEDICATION OF AN EASEMENT FOR PUBLIC ROAD PURPOSES INCLUDING PUBLIC UTILITY AND PUBLIC SERVICE USES, RECORDED MARCH 5, 1976 AS INSTRUMENT NO. 1976-0029552 OF OFFICIAL RECORDS.



CIVIL ENGINEERING • PLANNING • SURVEYORS
1880 COMPTON AVENUE, SUITE 100
CORONA, CA. 92881-3370 • 951-734-2130

R:\20\2029\SURVEY\LEGALS\Vacation\2029 VAC 01.dwg

Thomas Caseldine

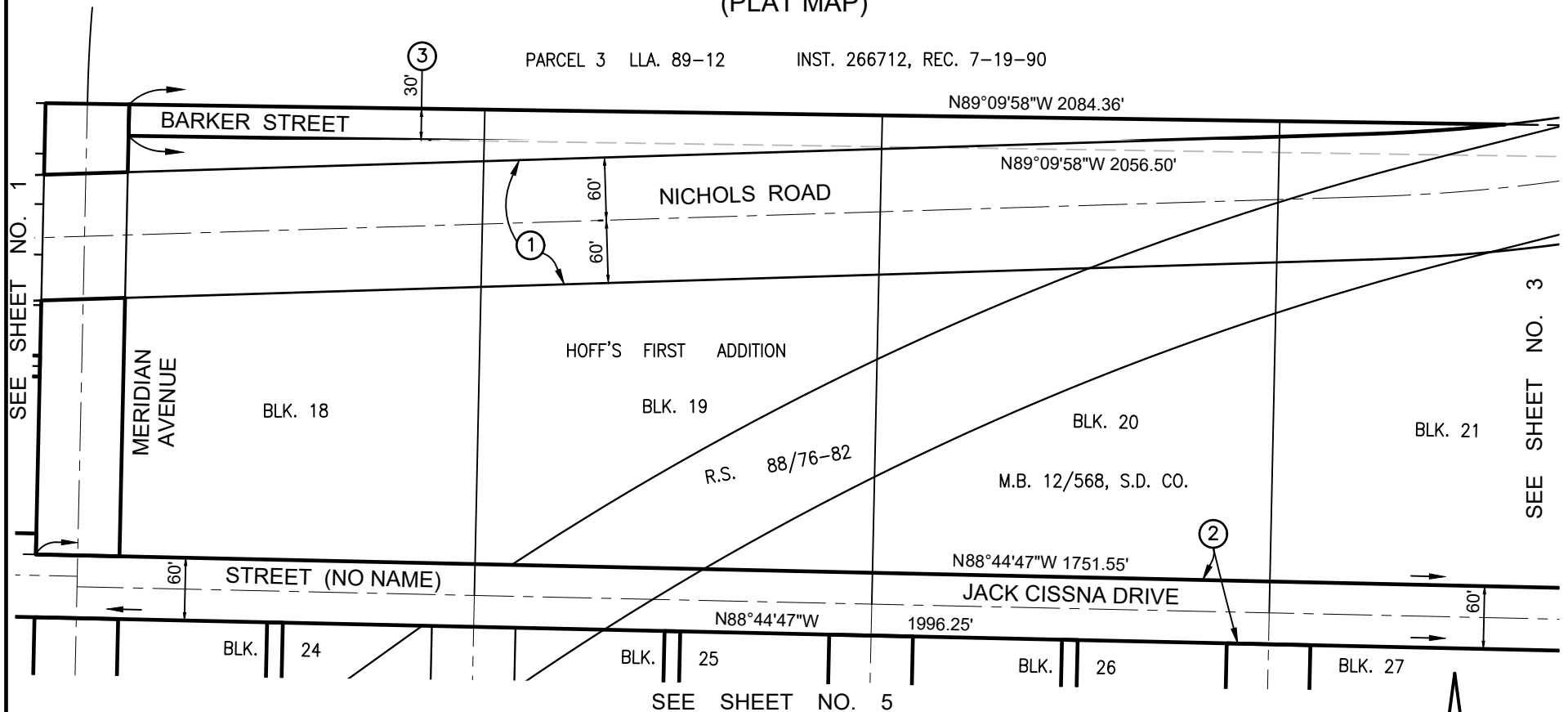
THOMAS M. CASELDINE
L.S. 9029

11-22-24

DATE

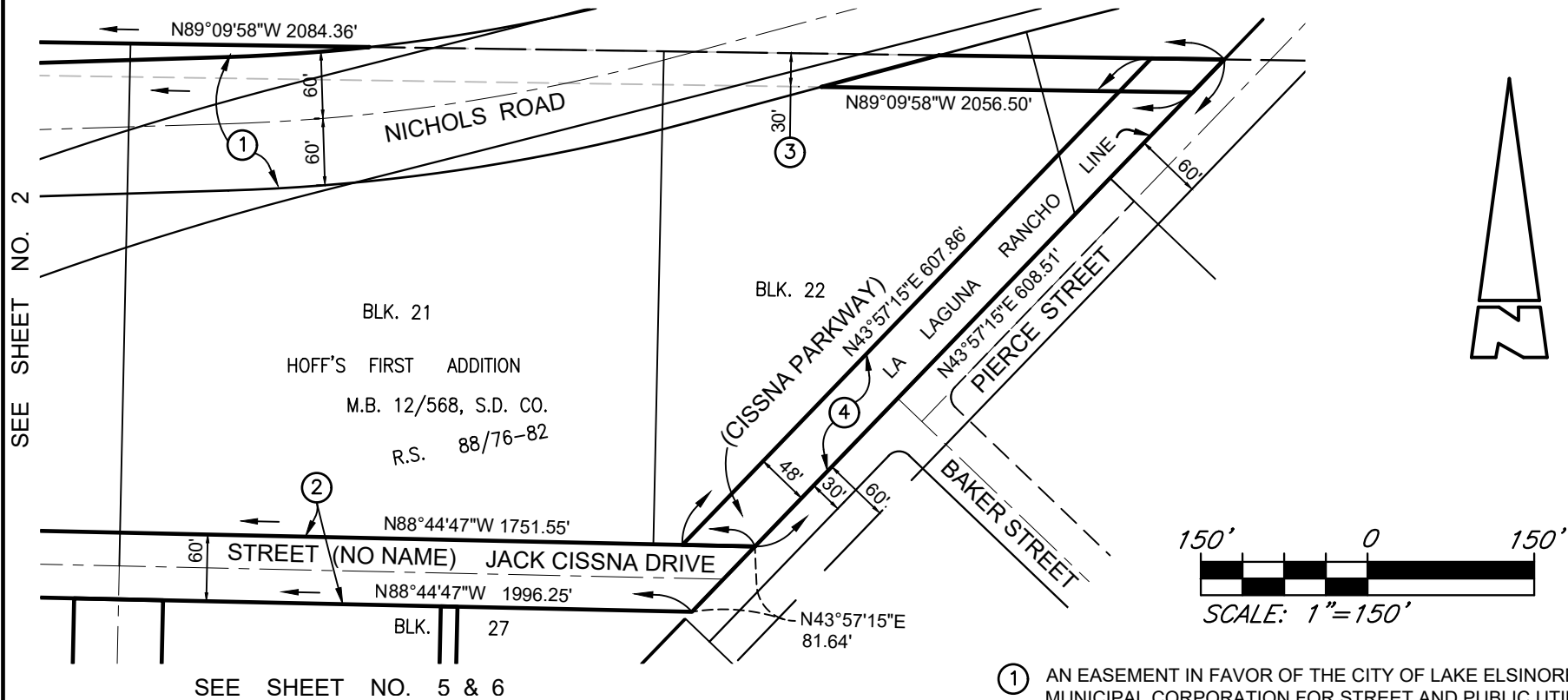
EXHIBIT "B"
VACATION OF PUBLIC RIGHT OF WAY
AND PUBLIC UTILITY EASEMENTS
(PLAT MAP)

SHEET 2 OF 6 SHEETS



- ① AN EASEMENT IN FAVOR OF THE CITY OF LAKE ELSINORE, A MUNICIPAL CORPORATION FOR STREET AND PUBLIC UTILITY AND DRAINAGE PURPOSES, RECORDED DECEMBER 14, 2011 AS INSTRUMENT NO. 2011-0553628 OF OFFICIAL RECORDS.
- ② AN IRREVOCABLE OFFER OF DEDICATION OF AN EASEMENT FOR PUBLIC ROAD PURPOSES INCLUDING PUBLIC UTILITY AND PUBLIC SERVICE USES (JACK CISSNA DRIVE), RECORDED MARCH 5, 1976 AS INSTRUMENT NO. 1976-0029551 OF OFFICIAL RECORDS.
- ③ AN IRREVOCABLE OFFER OF DEDICATION OF AN EASEMENT FOR PUBLIC ROAD PURPOSES INCLUDING PUBLIC UTILITY AND PUBLIC SERVICE USES, RECORDED MARCH 5, 1976 AS INSTRUMENT NO. 1976-0029552 OF OFFICIAL RECORDS.

EXHIBIT "B"
VACATION OF PUBLIC RIGHT OF WAY
AND PUBLIC UTILITY EASEMENTS
(PLAT MAP)



- ① AN EASEMENT IN FAVOR OF THE CITY OF LAKE ELSINORE, A MUNICIPAL CORPORATION FOR STREET AND PUBLIC UTILITY AND DRAINAGE PURPOSES, RECORDED DECEMBER 14, 2011 AS INSTRUMENT NO. 2011-0553628 OF OFFICIAL RECORDS.
- ② AN IRREVOCABLE OFFER OF DEDICATION OF AN EASEMENT FOR PUBLIC ROAD PURPOSES INCLUDING PUBLIC UTILITY AND PUBLIC SERVICE USES (JACK CISSNA DRIVE), RECORDED MARCH 5, 1976 AS INSTRUMENT NO. 1976-0029551 OF OFFICIAL RECORDS.
- ③ AN IRREVOCABLE OFFER OF DEDICATION OF AN EASEMENT FOR PUBLIC ROAD PURPOSES INCLUDING PUBLIC UTILITY AND PUBLIC SERVICE USES, RECORDED MARCH 5, 1976 AS INSTRUMENT NO. 1976-0029552 OF OFFICIAL RECORDS.
- ④ AN IRREVOCABLE OFFER OF DEDICATION OF AN EASEMENT FOR PUBLIC ROAD PURPOSES INCLUDING PUBLIC UTILITY AND PUBLIC SERVICE USES, RECORDED FEBRUARY 19, 1976 AS INSTRUMENT NO. 1976-0021698 OF OFFICIAL RECORDS.

KWC ENGINEERS

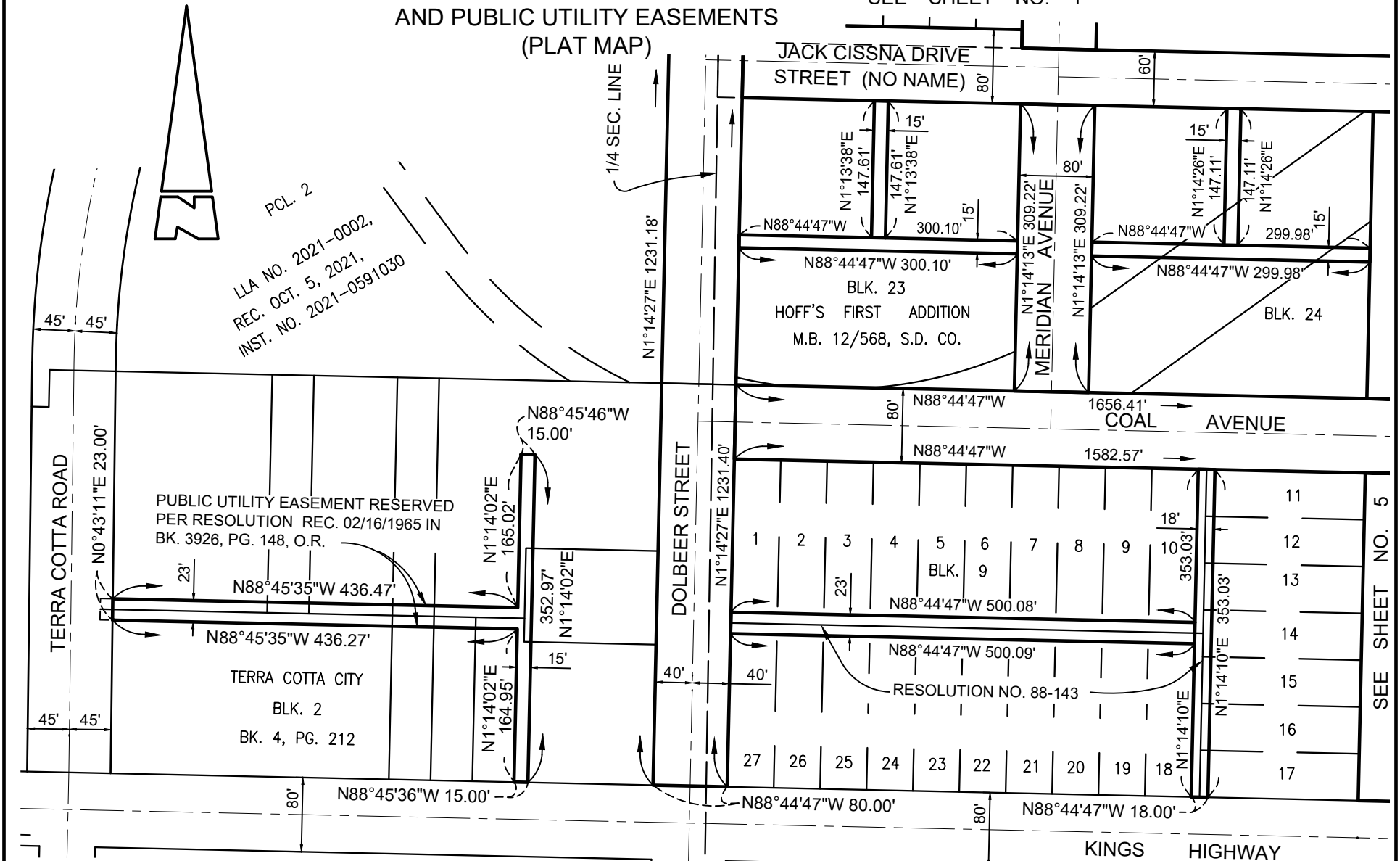
CIVIL ENGINEERING • PLANNING • SURVEYORS
1880 COMPTON AVENUE, SUITE 100
CORONA, CA. 92881-3370 • 951-734-2130

R:\20\2029\SURVEY\LEGALS\Vacation\2029 VAC 03.dwg

EXHIBIT "B"
VACATION OF PUBLIC RIGHT OF WAY
AND PUBLIC UTILITY EASEMENTS
(PLAT MAP)

SHEET 4 OF 6 SHEETS

SEE SHEET NO. 1



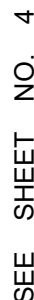
CIVIL ENGINEERING • PLANNING • SURVEYORS
1880 COMPTON AVENUE, SUITE 100
CORONA, CA. 92881-3370 • 951-734-2130

R:\20\2029\SURVEY\LEGALS\Vacation\2029 VAC 04.dwg

SEE SHEET NO. 5

EXHIBIT "B"

SEE SHEET NO. 3



CIVIL ENGINEERING • PLANNING • SURVEYORS
1880 COMPTON AVENUE, SUITE 100
CORONA, CA. 92881-3370 • 951-734-2130

R:\20\2029\SURVEY\LEGALS\Vacation\2029 VAC 05.dwg

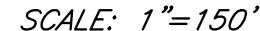
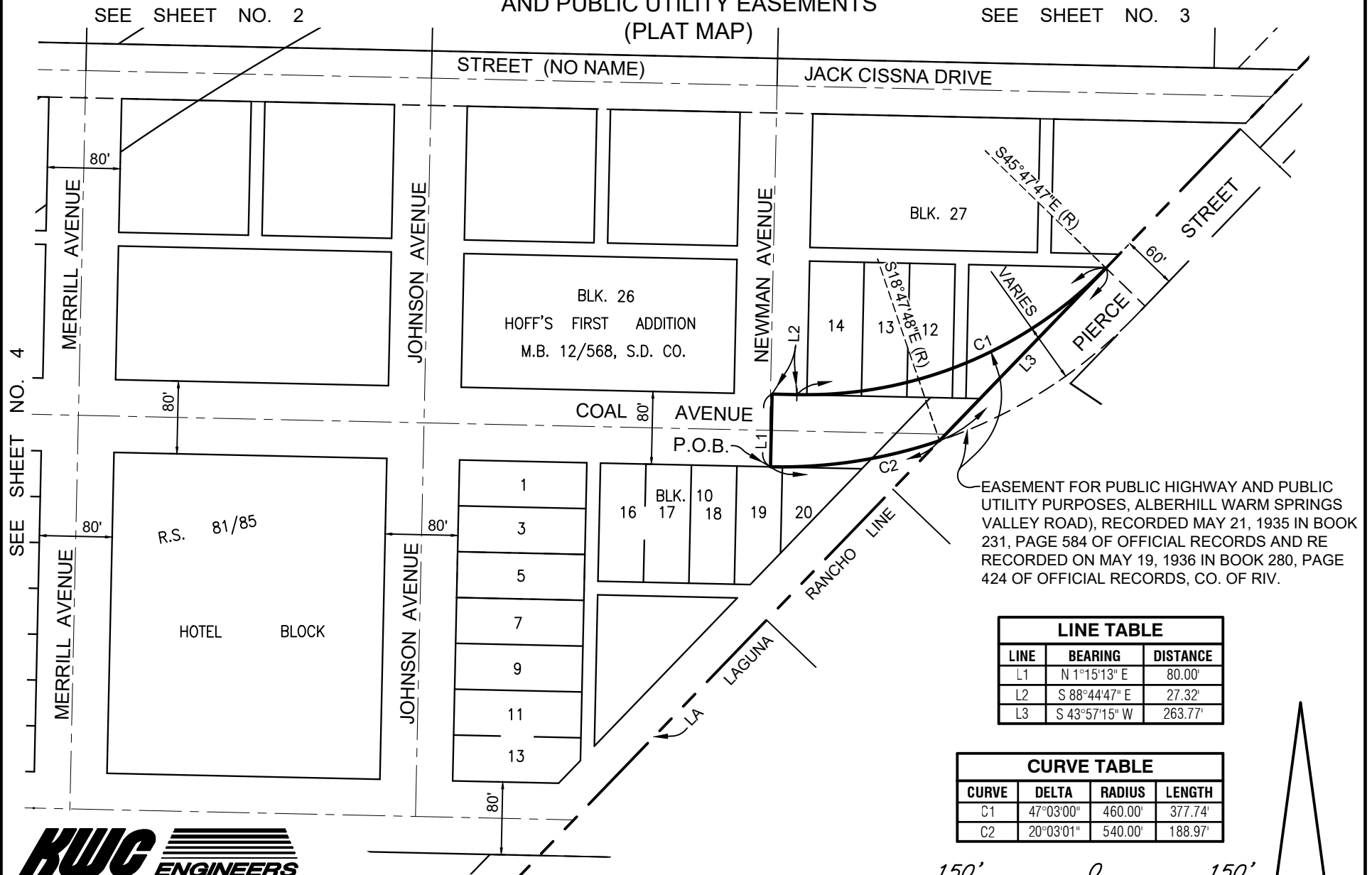


EXHIBIT "B"
VACATION OF PUBLIC RIGHT OF WAY
AND PUBLIC UTILITY EASEMENTS
(PLAT MAP)

SHEET 6 OF 6 SHEETS



LINE TABLE		
LINE	BEARING	DISTANCE
L1	N 1°15'13" E	80.00'
L2	S 88°44'47" E	27.32'
L3	S 43°57'15" W	263.77'

CURVE TABLE			
CURVE	DELTA	RADIUS	LENGTH
C1	47°03'00"	460.00'	377.74'
C2	20°03'01"	540.00'	188.97'

