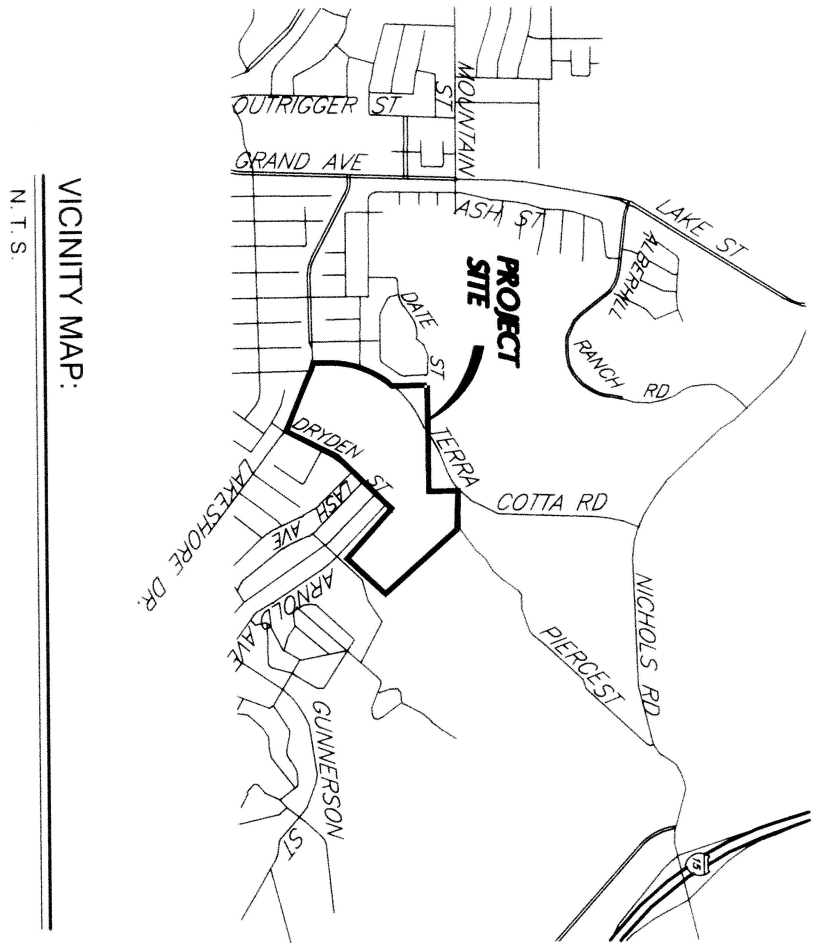


TRACT MAP NO. 36557

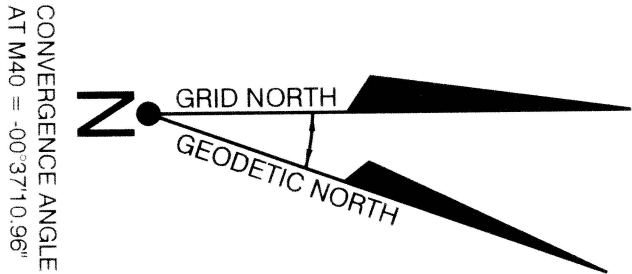
BEING A SUBDIVISION OF PARCELS 1 THROUGH 10 AS SHOWN ON GRANT DEED RECORDED JUNE 18, 2021, AS DOCUMENT NO. 2021-0371079 OF OFFICIAL RECORDS, IN THE OFFICE OF THE COUNTY RECORDER OF THE COUNTY OF RIVERSIDE, STATE OF CALIFORNIA, WITHIN PORTIONS OF RANCHO LA LAGUNA AND SECTIONS 26 & 35, TOWNSHIP 5 SOUTH, RANGE 5 WEST, SAN BERNARDINO MERIDIAN.

KWC ENGINEERS JULY 2021

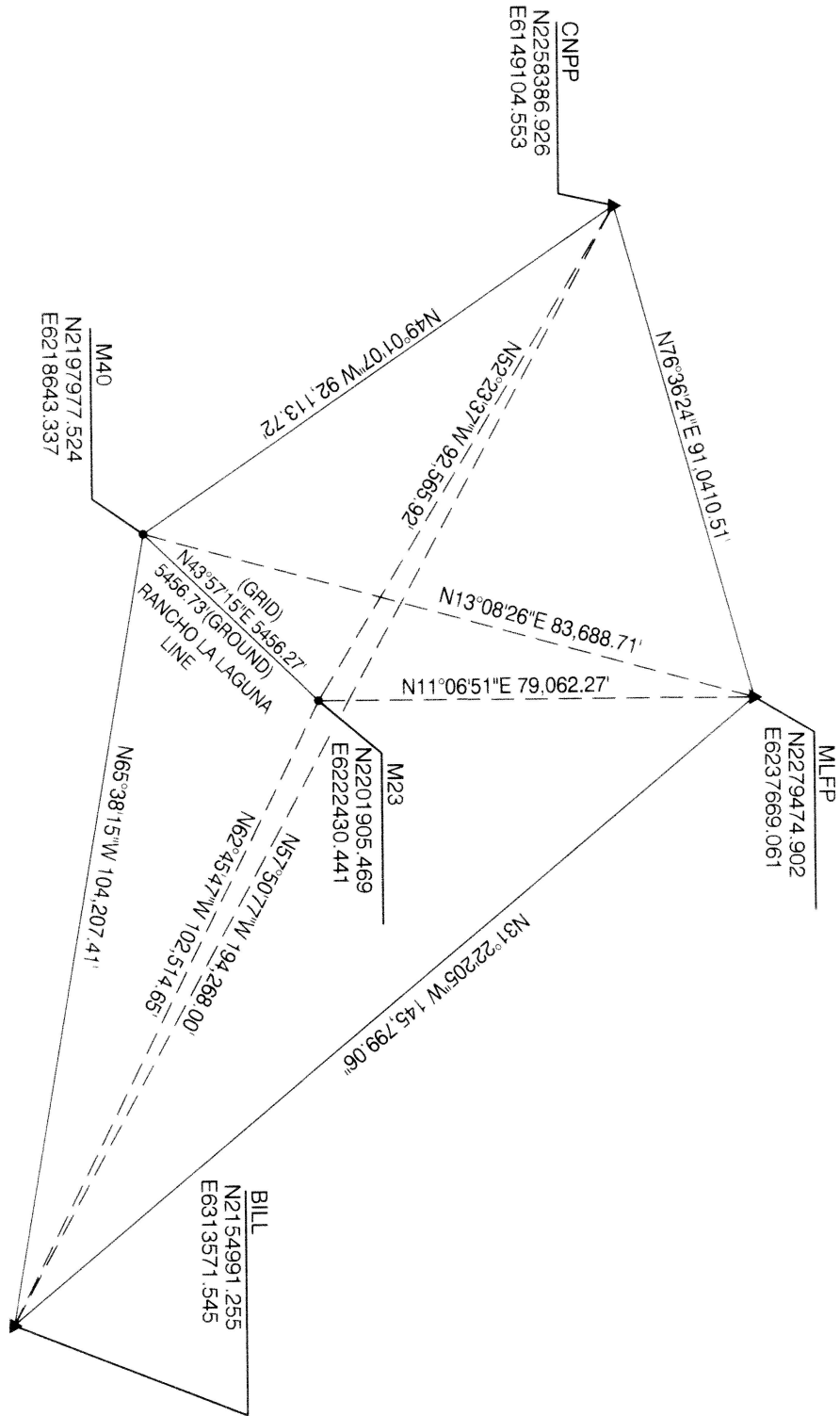
BOUNDARY ESTABLISHMENT INDEX SHEET



VICINITY MAP:
N T S



CONVERGENCE ANGLE
AT M40 = -00°37'10.96\"/>

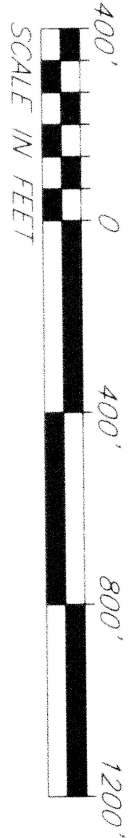


GPS ESTABLISHMENT

NOTE: ALL DISTANCES ARE GRID
UNLESS NOTED OTHERWISE

BASIS OF BEARINGS:

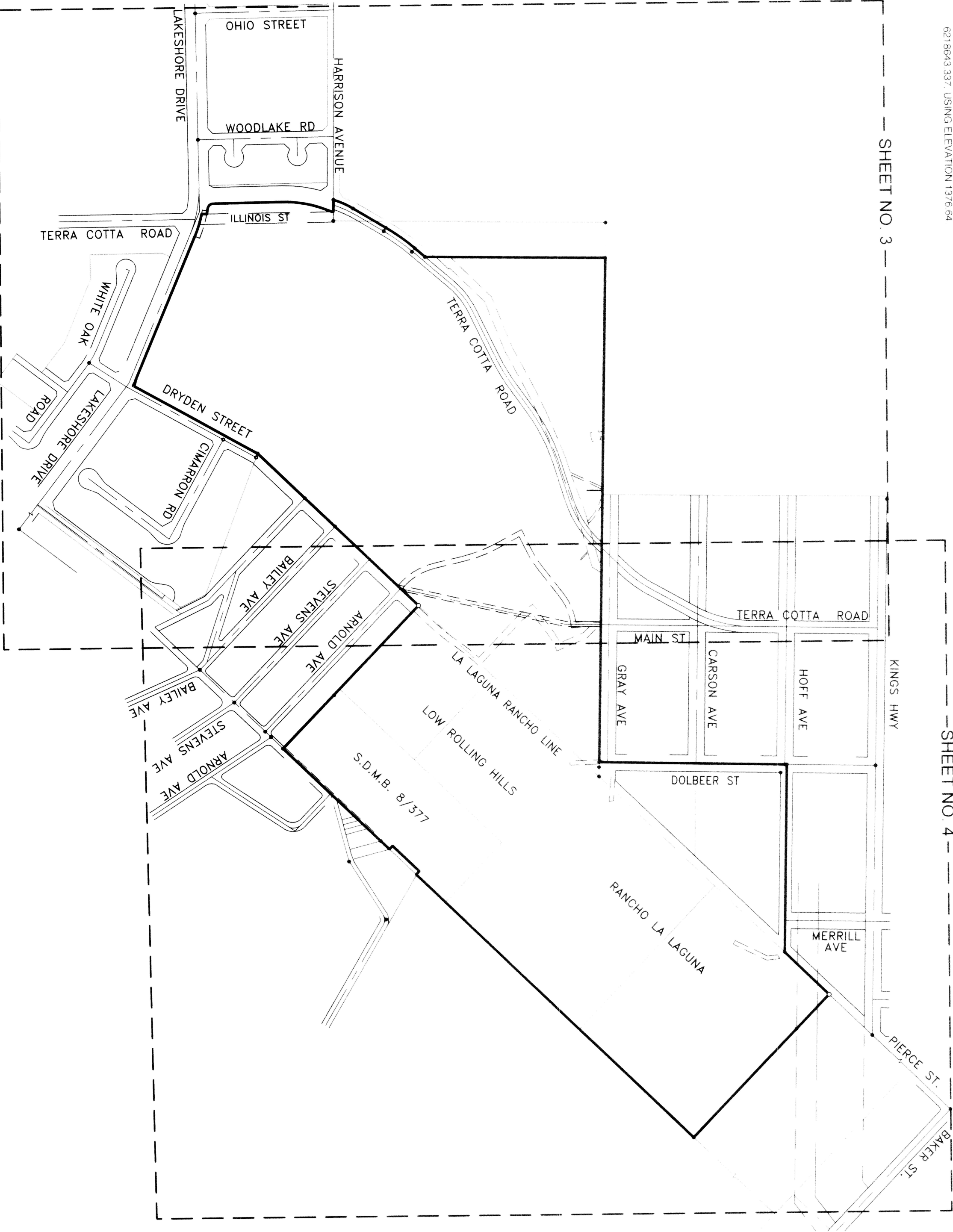
THE BASIS OF BEARINGS FOR THIS MAP IS THE CALIFORNIA STATE PLANE COORDINATE SYSTEM CCS83, ZONE 6, BASED LOCALLY ON CONTROL STATIONS "MLFP", "BILL" AND "CNP". NAD 83 (NRS2011), EPOCH 2010.00 AS SHOWN HEREON. ALL BEARINGS SHOWN ON THIS MAP ARE GRID. QUOTED BEARINGS AND DISTANCES FROM REFERENCE MAPS OR DEEDS ARE AS SHOWN PER THE RECORD REFERENCE. ALL DISTANCES SHOWN ARE GROUND DISTANCES PER THE RECORD REFERENCE. GRID DISTANCES MAY BE OBTAINED BY MULTIPLYING THE GROUND DISTANCE BY A COMBINATION FACTOR OF 0.9991624. CALCULATIONS ARE MADE AT FOUND MONUMENT "M40" WITH COORDINATES OF N2197977.524, E6218643.337, USING ELEVATION 1376.64.



SCALE IN FEET

SHEET NO. 3

SHEET NO. 4



NOTE:

1. SEE SHEET NO. 5 FOR SURVEYORS NOTES, MONUMENTATION NOTES AND ESTABLISHMENT NOTES
2. SEE SHEET NO. 6 FOR EASEMENT NOTES