

DOST ENGINEERING

PLANNING, DESIGN & CONSTRUCTION SUPPORT

Date: March 13, 2023

Mr. Carlos Norvani, Project Manager
City of Lake Elsinore
130 South Main Street
Lake Elsinore, CA 92530

RE: Additional Engineering Services for SB821-FY2022, Added ADA Curb Ramps, Sidewalks, Driveways and Cross Gutter Locations.

Dear Carlos,

As you know, we have been working on adding various locations based on two 2 field meetings and via emails requests from the City staff. These added locations include various improvements including curb ramps, sidewalk locations, curb and gutter, driveways, and drainage related improvements.

ADDITIONAL PROFESSIONAL SERVICES

Please see attached Appendix C for locations of improvements added.

Additional Locations

- Sidewalk along Pottery Street, Sumner Avenue, Chestnut and Prospect Street
- Curb and Gutter along Chestnut Street
- 4 - Curb Ramps along Chestnut Street and Ellis Street
- 22 – Driveways various locations
- 1 – Intersection Cross Gutter
- 1 – Sinkhole and Storm Drain repair location and detail

Dost Engineering, Inc. will add to the plan, details elevations and notes for requested improvements to the SB821-FY2022 Project.

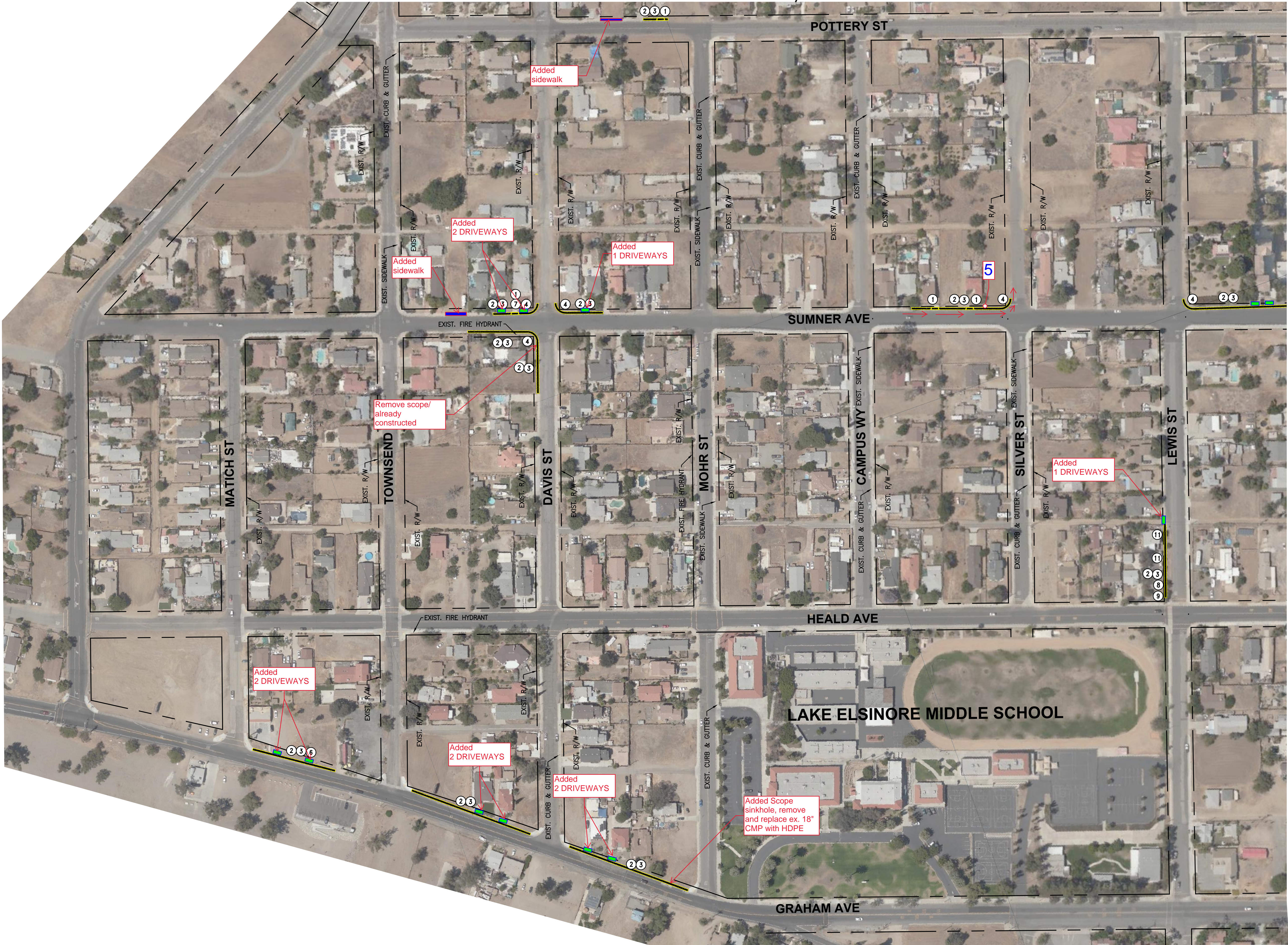
COMPENSATION FOR SERVICES

The Total fees for the additional professional services shown above is **\$9,600.**

Please let us know if you have any questions or need additional information in regard to this Additional Professional Service #1. We appreciate the opportunity to be of service and look forward to continue to working with you.

Sincerely,
Farid Dost
Dost Engineering, Inc.
Farid Dost, P.E.
Principal Engineer

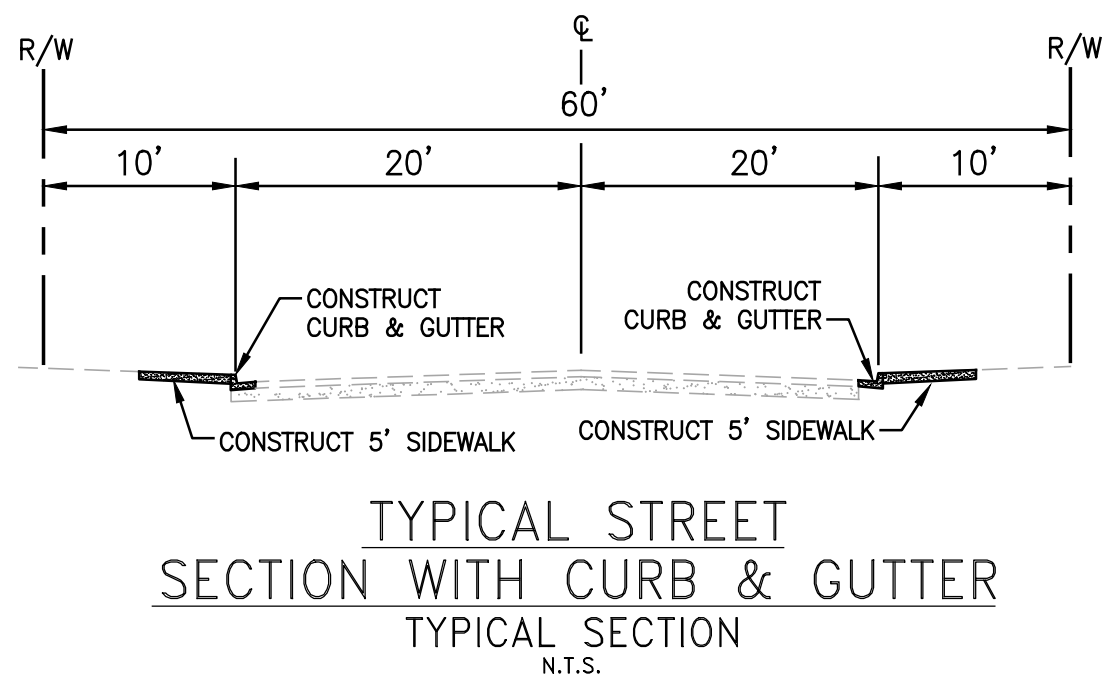
PROJECT MAP/PLAN



MATCHLINE - SEE SHEET 2

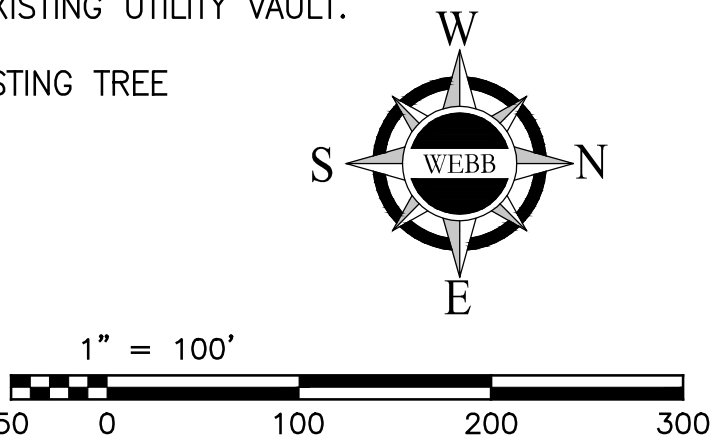
GENERAL NOTES:

1. AUTHORITY HOLDING JURISDICTION IS THE COUNTY OF RIVERSIDE TRANSPORTATION DEPARTMENT. ALL DESIGN AND CONSTRUCTION MUST COMPLY WITH COUNTY STANDARDS AND REQUIREMENTS.
2. NEW CONCRETE DRIVEWAYS TO EXTEND TO EXISTING RIGHT OF WAY.
3. RELOCATE EXISTING ROADWAY SIGNAGE AND AND UTILITIES AS APPLICABLE.
4. NEW DRAINAGE STRUCTURES TO BE WITHIN EXISTING RIGHT OF WAY.
5. EXISTING MAILBOXES TO BE RELOCATED TO BACK OF NEW CURB.



SHEET NOTES:

- ① NEW CONCRETE RESIDENTIAL DRIVEWAY PER CITY STANDARD.
- ② NEW CONCRETE CURB AND GUTTER PER CITY STANDARD.
- ③ NEW 6' CONCRETE SIDEWALK PER CITY STANDARD.
- ④ NEW CONCRETE ADA CURB RAMP AT INTERSECTION PER COUNTY STANDARD 403.
- ⑤ SAWCUT AC, NEW AC SECTION $\pm 2'-3'$
- ⑥ REMOVE DAMAGED SIDEWALK
- ⑦ RELOCATE EXISTING MAILBOX.
- ⑧ RELOCATE EXISTING CHAIN LINK FENCE.
- ⑨ RELOCATE EXISTING ROAD SIGN.
- ⑩ RELOCATE EXISTING UTILITY VAULT.
- ⑪ REMOVE EXISTING TREE



THESE PLANS HAVE BEEN REVIEWED FOR COMPLIANCE WITH THE APPROPRIATE CONDITIONS OF DEVELOPMENT AND/OR CITY AND STATE LAWS AND HAVE BEEN FOUND ACCEPTABLE

Remon Habib

REMON HABIB, RCE No. 83156
CITY ENGINEER
CITY OF LAKE ELSINORE

4/22/2021
DATE

CITY OF LAKE ELSINORE
DREAM EXTREME

PREPARED BY:
C. NORVANI

4/22/2021
DATE

REQUIRED PROFESSIONAL SEAL
REMON A. HABIB
No. C-83156
Exp. 3/31/23
CIVIL
STATE OF CALIFORNIA

BENCHMARK:
RIV. CO. BM: EL-3.0-80
DATUM: NGVD 29
ELEV: 1264.89FT

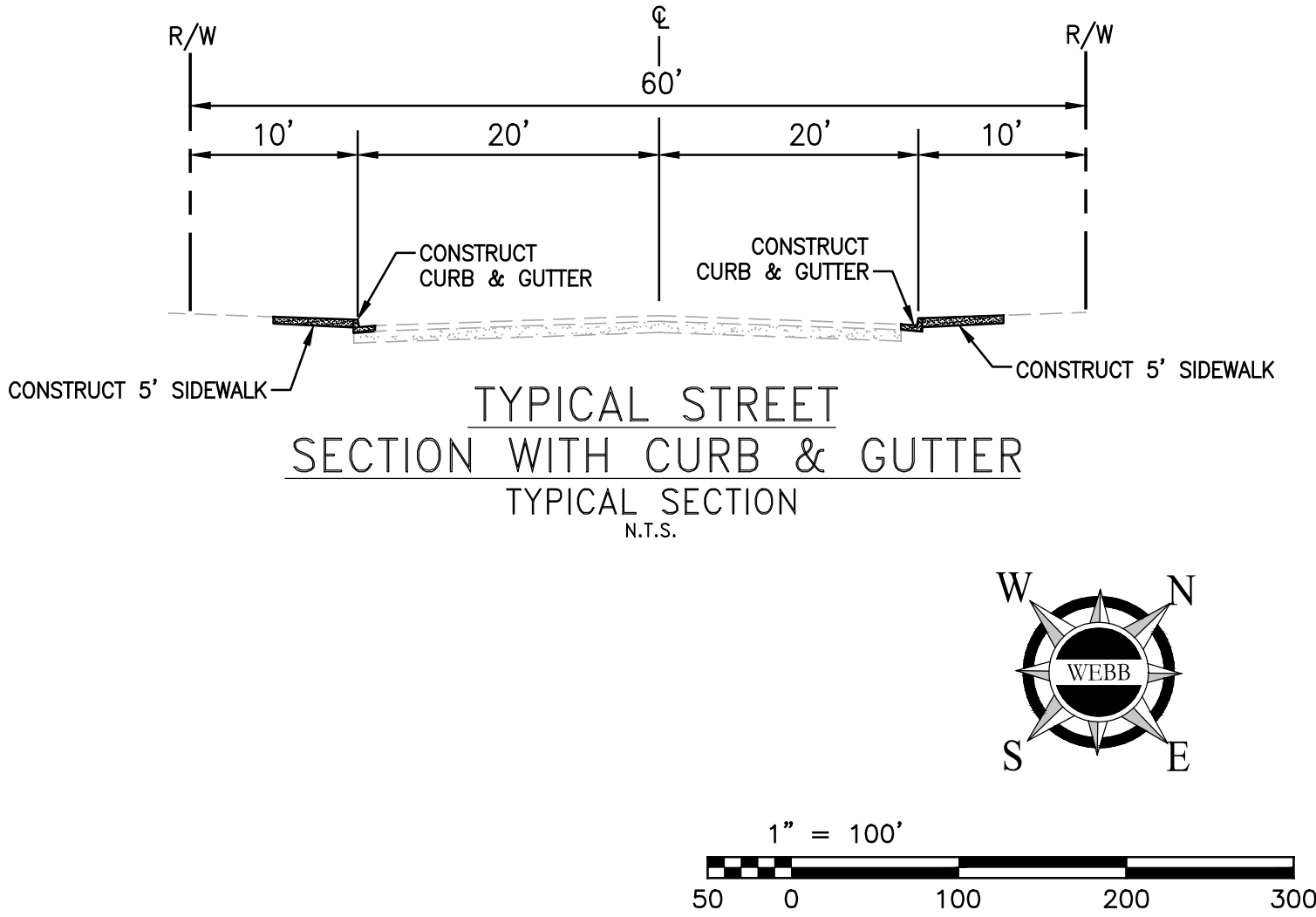
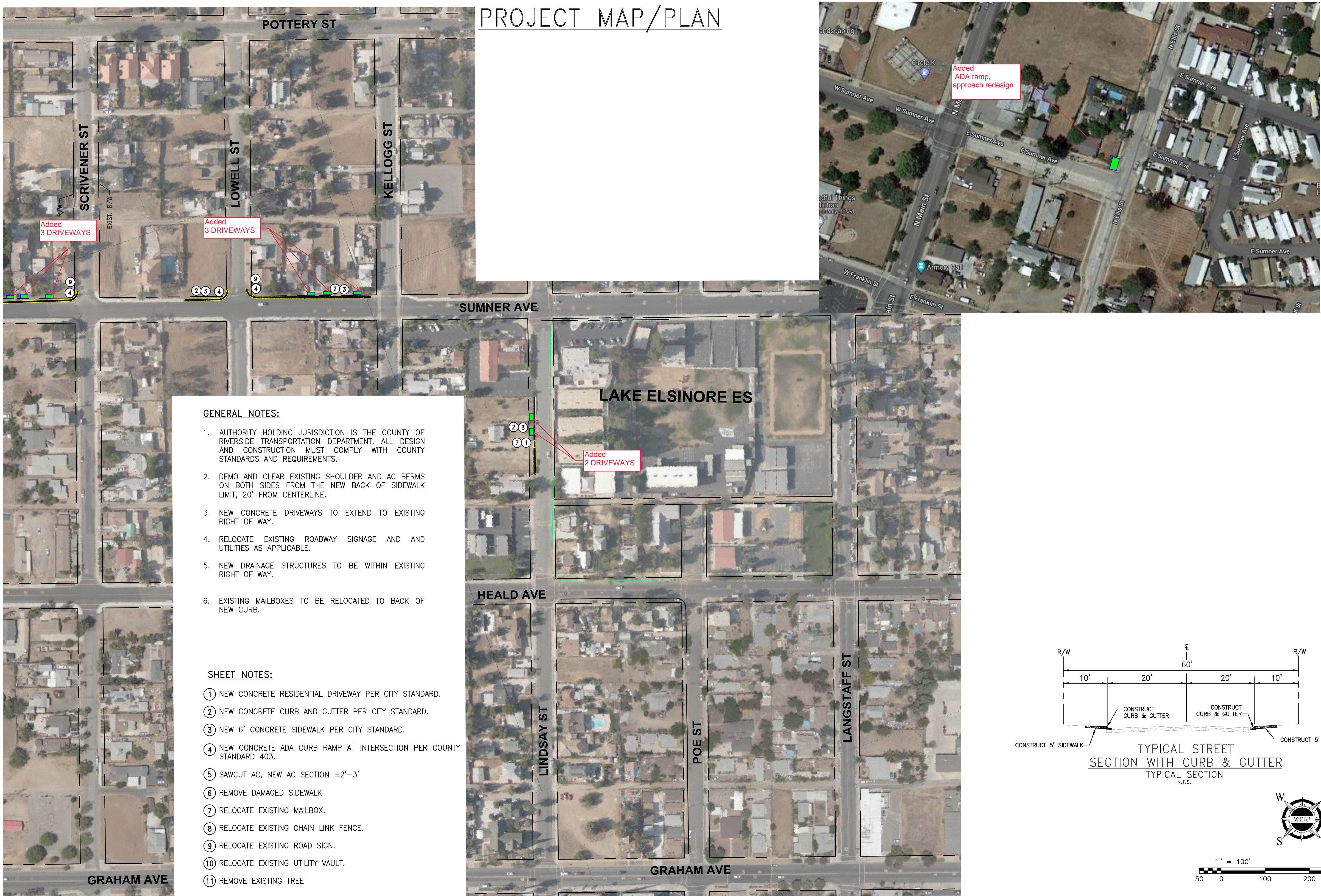
SCALE: N.T.S.


CITY OF LAKE ELSINORE
SB 821 SIDEWALK EXHIBIT
DOWNTOWN SIDEWALKS

LAKE ELSINORE MS

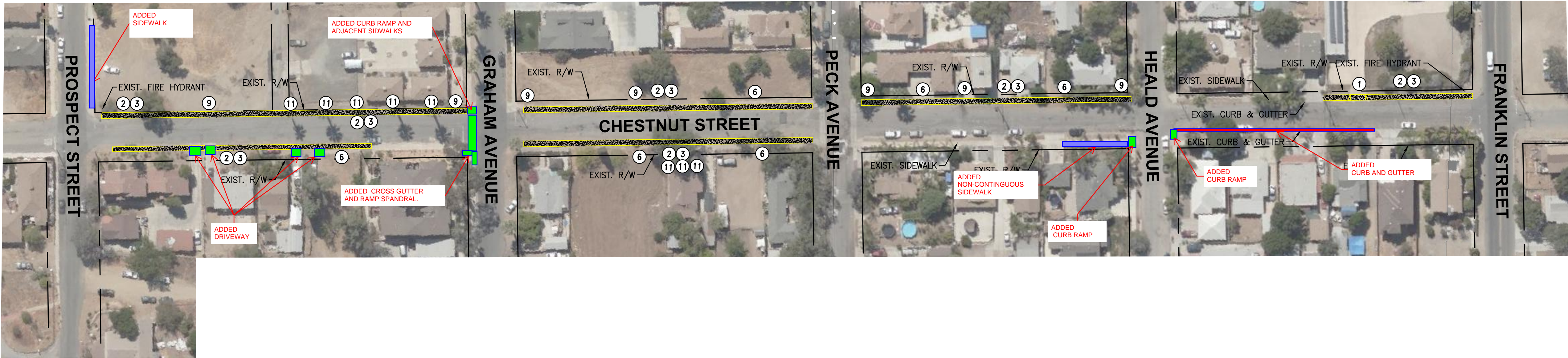
SHEET 1
OF 3
SHEETS
CITY PROJECT NO.
SB 821

MATCHLINE - SEE SHEET 1



			THESE PLANS HAVE BEEN REVIEWED FOR COMPLIANCE WITH THE APPROPRIATE CONDITIONS OF DEVELOPMENT AND/OR CITY AND STATE LAWS AND HAVE BEEN FOUND ACCEPTABLE		 PREPARED BY: REMON A. HABIB CITY ENGINEER C. NORVANI		BENCHMARK: RIV. CO. BM: EL-3.0-80 DATUM: NGVD 29 ELEV: 1264.89FT SCALE: N.T.S.		CITY OF LAKE ELSINORE SB 821 SIDEWALK EXHIBIT DOWNTOWN SIDEWALKS LAKE ELSINORE ES		SHEET 2 OF 3 CITY PROJECT NO. SB 821
			REMON HABIB, RCE No. 83156 CITY ENGINEER CITY OF LAKE ELSINORE		4/22/2021 DATE		5/22/2021 DATE				

PROJECT MAP/PLAN

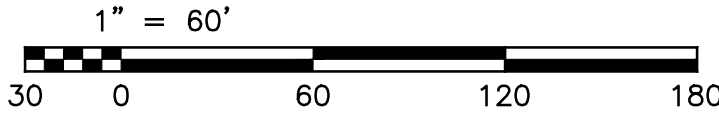
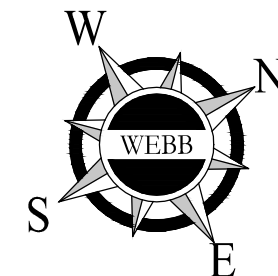
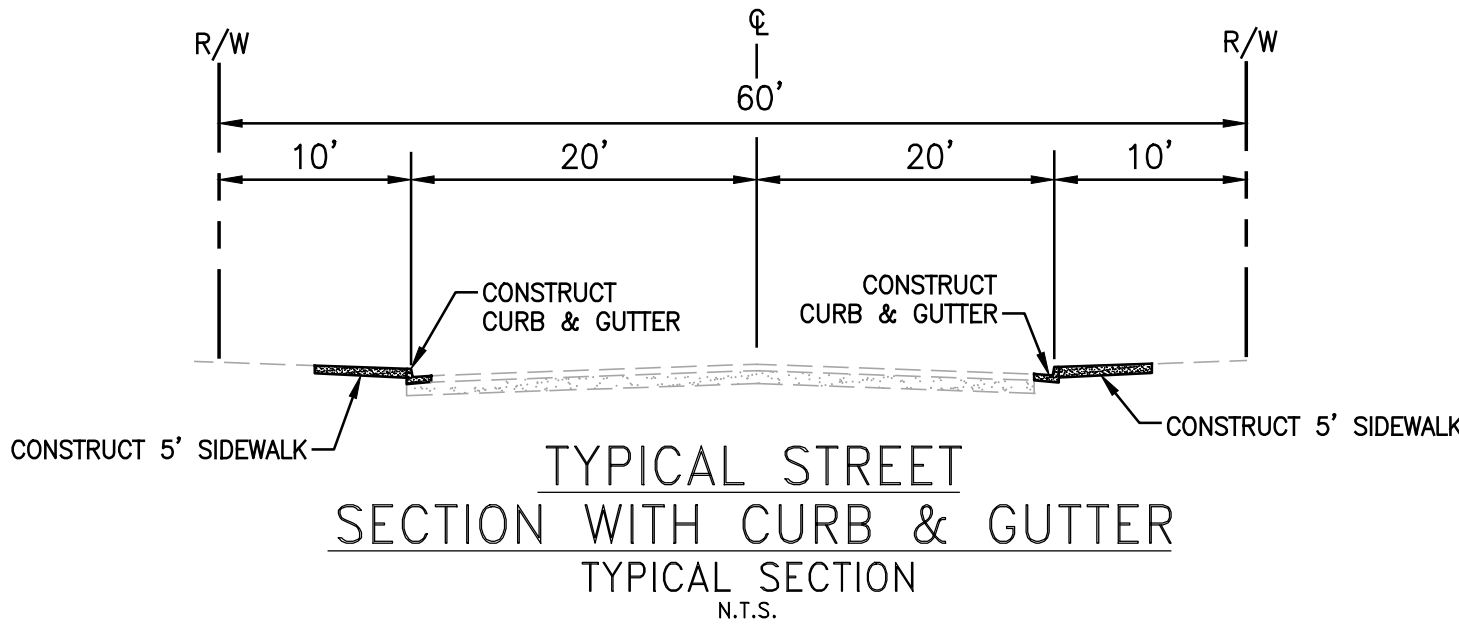


GENERAL NOTES:

- 1. AUTHORITY HOLDING JURISDICTION IS THE CITY OF LAKE ELSINORE. ALL DESIGN AND CONSTRUCTION MUST COMPLY WITH CITY STANDARDS AND REQUIREMENTS.
- 2. DEMO AND CLEAR EXISTING SHOULDER ON NORTH SIDE OF MACHADO STREET TO THE NEW BACK OF SIDEWALK LIMIT, 30' FROM CENTERLINE.
- 3. NEW CONCRETE DRIVEWAYS TO EXTEND TO EXISTING RIGHT OF WAY.
- 4. RELOCATE EXISTING ROADWAY SIGNAGE AND AND UTILITIES AS APPLICABLE.
- 5. NEW DRAINAGE STRUCTURES TO BE WITHIN EXISTING RIGHT OF WAY.
- 6. EXISTING MAILBOXES TO BE RELOCATED TO BACK OF NEW SIDEWALK.

SHEET NOTES:

- ① NEW CONCRETE RESIDENTIAL DRIVEWAY PER CITY STANDARD.
- ② NEW CONCRETE CURB AND GUTTER PER CITY STANDARD.
- ③ NEW 6' CONCRETE SIDEWALK PER CITY STANDARD.
- ④ NEW CONCRETE ADA CURB RAMP AT INTERSECTION PER COUNTY STANDARD 403.
- ⑤ SAWCUT AC, NEW AC SECTION ±2'-3'
- ⑥ REMOVE DAMAGED SIDEWALK
- ⑦ RELOCATE EXISTING MAILBOX.
- ⑧ RELOCATE EXISTING CHAIN LINK FENCE.
- ⑨ RELOCATE EXISTING ROAD SIGN.
- ⑩ RELOCATE EXISTING UTILITY VAULT.
- ⑪ REMOVE EXISTING TREE



			THESE PLANS HAVE BEEN REVIEWED FOR COMPLIANCE WITH THE APPROPRIATE CONDITIONS OF DEVELOPMENT AND/OR CITY AND STATE LAWS AND HAVE BEEN FOUND ACCEPTABLE		<div><div><div><div><div></div><div>CITY OF LAKE ELSINORE</div><div>DREAM EXTREME</div></div></div><div>PREPARED BY:</div><div>C. NORVANI</div></div><div><div>4/22/2021</div><div>DATE</div></div><div><div>4/22/2021</div><div>DATE</div></div></div>		<div><div><div>REMON A. HABIB</div><div>No. C-83156</div><div>Exp. 3/31/23</div></div><div>REGISTERED PROFESSIONAL ENGINEER</div><div>CIVIL</div><div>STATE OF CALIFORNIA</div></div> <div>BENCHMARK: RIV. CO. BM: EL-3.0-80 DATUM: NGVD 29 ELEV: 1264.89FT SCALE: N.T.S</div>		<div>CITY OF LAKE ELSINORE</div> <div>SB 821 SIDEWALK EXHIBIT</div> <div>DOWNTOWN SIDEWALKS</div> <div>CHESTNUT STREET</div>		<div>SHEET 3</div> <div>OF 3 SHEETS</div> <div>CITY PROJECT NO.</div> <div>SB 821</div>	
			<div><div>REMON HABIB</div><div>REMON HABIB, RCE No. 83156</div><div>CITY ENGINEER</div><div>CITY OF LAKE ELSINORE</div></div>									