



WILSON•MIKAMI•CORPORATION
CONSULTING ENGINEERS

9 CORPORATE PARK, SUITE 100•IRVINE•CA•92606

April 28, 2023

P.N. P11133.00

Yu Tagai, PE

Senior Civil Engineer

City of Lake Elsinore

130 S. Main Street

Lake Elsinore, CA 92530

ytagai@Lake-Elsinore.org

**SUBJECT: Proposal for Civil Engineering Services
Lakeshore Drive Sidewalk Project**

Dear Yu:

Wilson Mikami Corporation, Inc. (WMC) sincerely appreciates the opportunity to present a proposal to The City of Lake Elsinore for civil engineering services related to the referenced project.

This proposal includes the services that Wilson Mikami Corporation anticipates are required to accomplish the project goals. The proposal is based on a scope of work discussed with your office. The attached proposal includes the following information:

- Scope of Services
- Project Fee Summary
- List of Assumptions & Exclusions

Once again, thank you for considering Wilson Mikami Corporation for this project. We anticipate that you will send us your standard contract documents for review and execution if we are selected for this project. I can be reached at (949) 679-0092 to answer any questions you may have regarding this project proposal.

Sincerely,
Wilson Mikami Corporation, Inc.

Scott M. Wilson, P.E.
Principal

Enclosures

EXHIBIT 'A'
SCOPE OF SERVICES
Lakeshore Drive Sidewalk Project

Wilson Mikami Corporation (WMC) agrees to provide professional services to the Client as described below:

200 FINAL ENGINEERING PHASE

201 Research and Site Review

Prepare research of the project site which includes a review of existing street improvement, City Master Drainage Plan, and utility plans in the area. Obtain topographic map information for the project area to evaluate the drainage run-on areas to the proposed southerly curb and gutter. Perform field review of the existing street and utility improvements to identify constraints.

202 Field Survey and Base Map

Prepare a Field Survey and Base Map for the Street Improvement Area. A detail field topographic survey with 50' interval cross sections will be completed for the improvement area (approximate 1 mile of sidewalk, curb & gutter, curb ramps and drainage improvements along south side of Lakeshore Drive between the Senior Center and 400 feet of Herbert Avenue). An existing utility inventory will be compiled based on record research and field survey to be reflected on the base map. Existing property lines and right of way will be mapped on the base map.

203 Hydrology/Hydraulic Study

Complete a hydrology study of the drainage area using the City Master Drainage Plan information which includes performing street capacity calculations of the project areas to determine the amount of peak storm flows to be carried in the streets. Perform hydraulic calculations for the inlet/outlet areas of proposed drainage improvements.

204 Street Improvement Alternatives

Complete a street improvements alternatives study in areas that need special attention to the required grading for installing the proposed sidewalks, ADA ramps, and drainage outlets. The alternative study will include concept plans for the alternatives with cost estimates and a list of pros/cons for each alternative for City review. Drainage outlet improvements to be included in the analysis. Water quality BMPs at the outlets will be evaluated also if directed by the City. Final design will proceed after the final selection of the street improvement alternative by the City.

205 Final Plans, Specifications and Estimates (PS&E)

Prepare 60%, 90% and 100% level Final Plans, Specifications and Cost Estimates (PS&E) packages after the final selection of the street improvement alternatives. The Final Plans, Specifications and Cost Estimates will include a complete street improvement design and final plans. Identify any utility and right of way conflicts for the improvements. Coordinate review of the PS&E package by the City. Coordinate affected utilities with utility providers and obtain necessary clearances. Prepare Project Specifications, Cost Estimates and Bid Documents to City for bidding purposes.

EXHIBIT 'A'
SCOPE OF SERVICES
Lakeshore Drive Sidewalk Project

206 Right-of-Way Dedication Document

Provide a legal and plat for one property (APN 373-292-001) to dedicate additional right-of-way or road easement for this project.

207 Meetings and Coordination

Attend meetings to coordinate review of the project documents with the City and other team members and discuss comments and responses to comments and project status.

EXHIBIT 'B'
FEE SCHEDULE
Lakeshore Drive Sidewalk Project

TASK	DESCRIPTION	FEE
200	FINAL ENGINEERING	
201	Research and Site Review	\$ 3,600
202	Field Survey and Base Map	\$ 14,000
203	Hydrology / Hydraulic Study	\$ 7,300
204	Street Improvement Alternatives	\$ 8,200
205	Final Plans, Specifications and Cost Estimates	\$ 37,400
206	Legals and Plat	\$ 5,600
207	Meetings and Coordination	\$ 3,600
Total (T&M NTE)		\$ 79,700

The estimated budget is a maximum for the work proposed based on the direction and information provided by your office. Work performed will be billed monthly on a fixed fee basis as noted above and is due and payable thirty (30) days from receipt of invoice. Retention shall not be withheld from payment. Direct costs, such as filing fees, will be paid by the Client.

This proposal is valid for 90 days.

All extra work shall be performed on a time-and-materials basis per the Standard Fee Schedule

T&M NTE = Time and Materials, Not to Exceed

EXHIBIT 'C'
ASSUMPTIONS AND EXCLUSIONS
Lakeshore Drive Sidewalk Project

ASSUMPTIONS:

This proposal was based on the following assumptions related to the proposed project:

- The proposed sidewalk improvement will be within existing right of way except one property (APN 373-292-001).

EXCLUSIONS:

Items not specifically identified in the scope of service sections of this proposal are to be excluded from this work effort and would be considered additional services. Such services would include, but are not limited to, the following:

- Title Report, Right Of Way Acquisition, Geotechnical Investigation, Pothole Service, Traffic Control Plans, Bid and Construction Support.

Wilson Mikami Corporation

FEE SCHEDULE

July 1, 2022 to June 30, 2023

Compensation for work performed on a time and materials basis will be computed as follows:

CIVIL ENGINEERING SERVICES and MAPPING

Hourly Rate

Principal	\$ 245.00
Senior Project Manager	\$ 215.00
Project Manager	\$ 205.00
Sr. Project Designer, Sr. Project Engineer, Assistant Project Manager	\$ 195.00
Project Engineer, Project Designer	\$ 185.00
Sr. Designer, Sr. Design Engineer	\$ 175.00
Design Engineer, Designer	\$ 160.00
Assistant Engineer, Research/Processing Coordinator, Sr. CADD Technician	\$ 140.00
CADD Technician	\$ 130.00
Jr. Engineer	\$ 110.00
Jr. CADD Technician	\$ 105.00
Engineering Aide, Office Work	\$ 100.00

LICENSED LAND SURVEYOR and MAPPING SERVICES (Overtime to be billed at 1.35% regular rate)

Licensed Land Surveyor, Sr. Project Manager	\$ 216.00
Sr. Project Surveyor/Chief of Parties	\$ 205.00
Project Surveyor	\$ 185.00
Survey Analyst	\$ 160.00
Survey Aide	\$ 140.00

FIELD SURVEY (Overtime to be billed at 1.45% regular rate)

One Person Crew	\$ 215.00
Two Person Crew	\$ 345.00
Three Person Crew	\$ 445.00
One Person Crew – Prevailing Wage	\$ 225.00
Two Person Crew - Prevailing Wage	\$ 355.00
Three Person Crew - Prevailing Wage	\$ 465.00

Note: There will be a 2-hour minimum for Field Crew time.

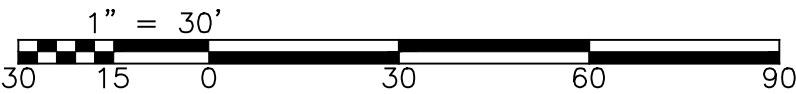
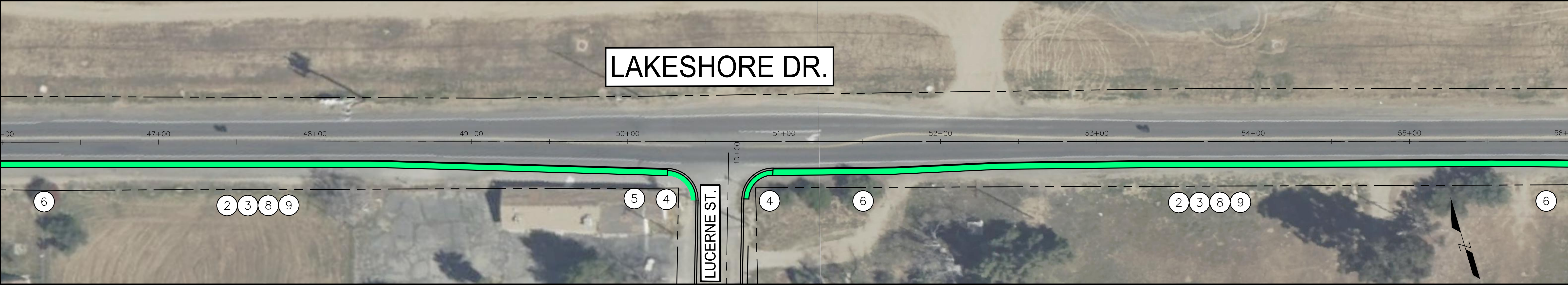
MISCELLANEOUS FEES


The following services are billed at our cost plus 15%:

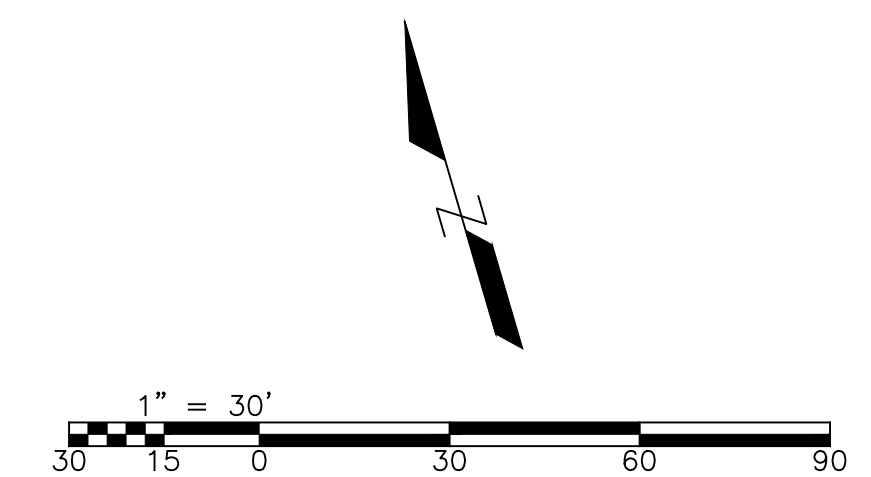
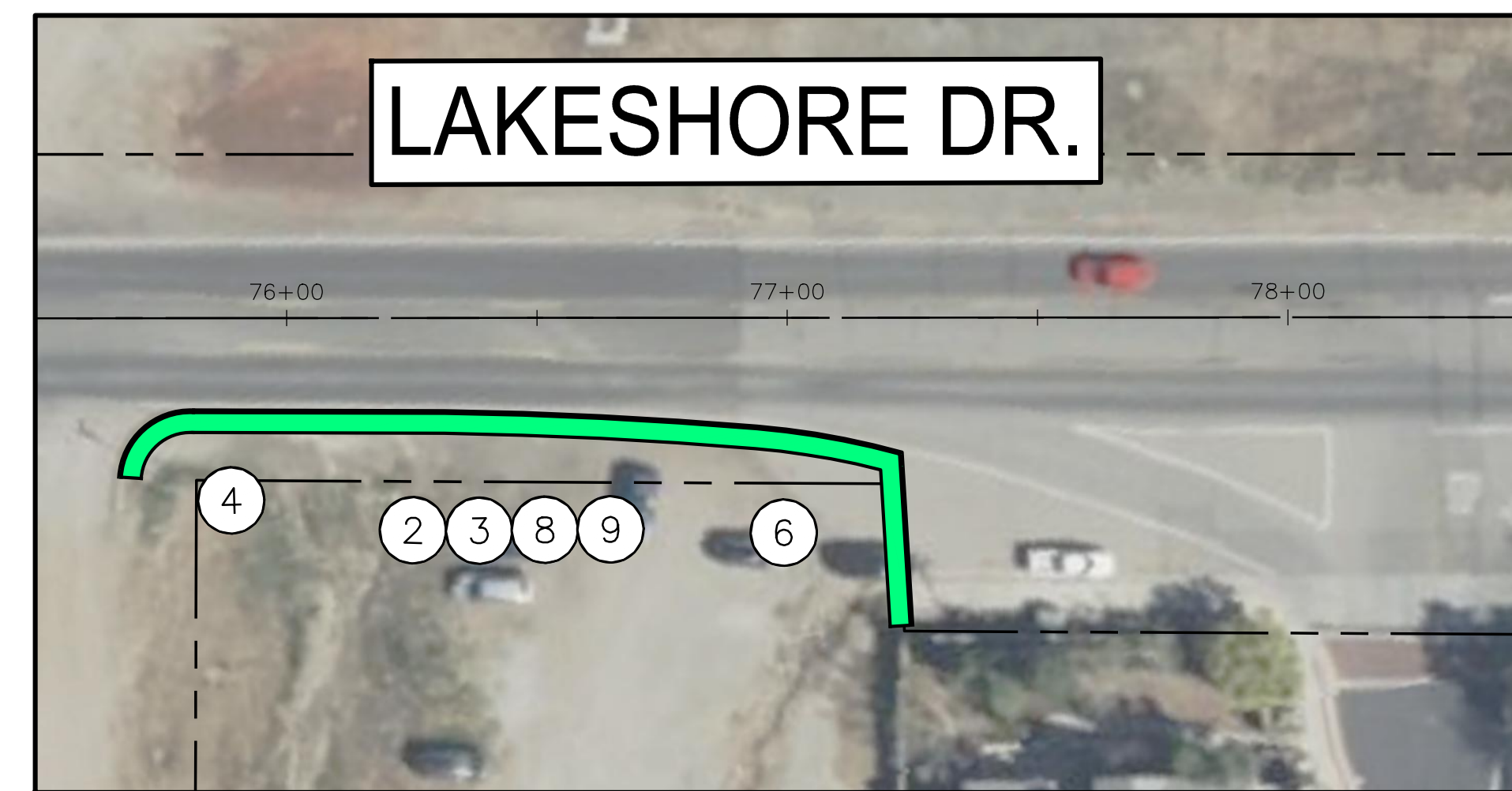
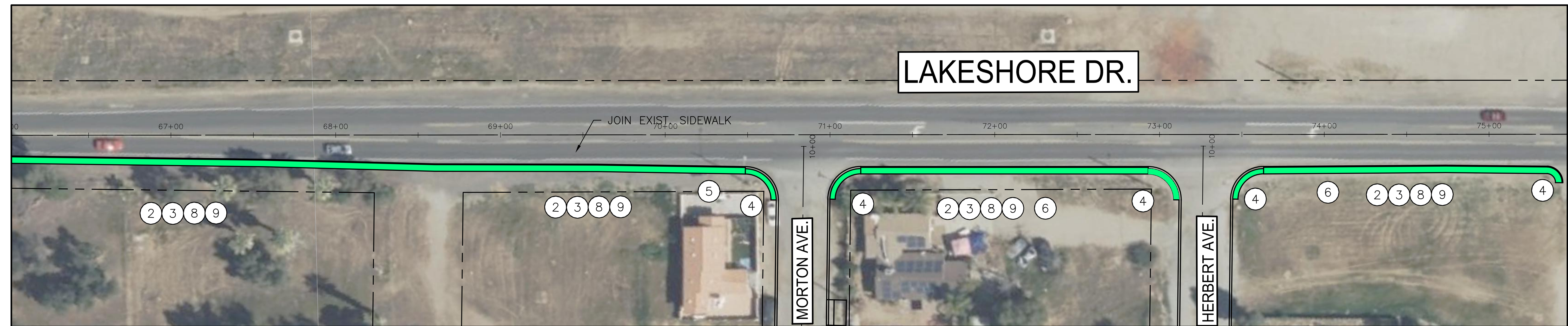
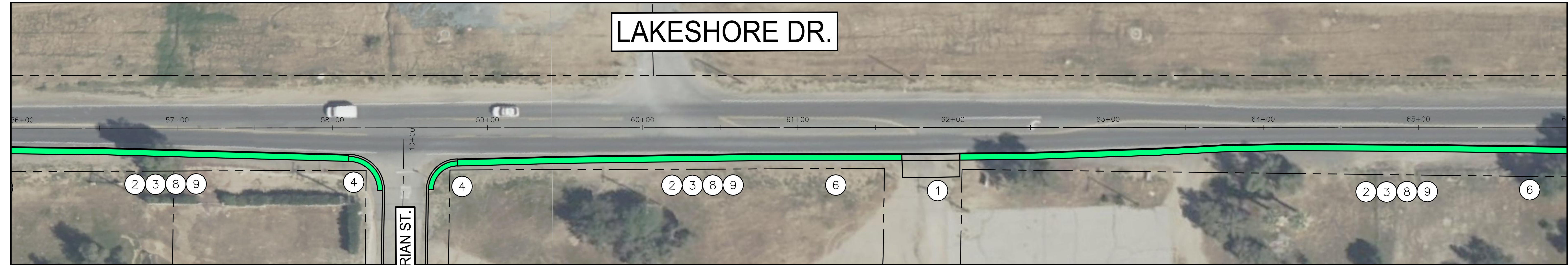
- Subcontract services. Plan check fees or filing fees advanced by us. Transportation, meals and lodging for overnight travel and incidental travel expenses. Commercial delivery services including Federal Express, Express Mail, and Messenger Services. Plotting and blueprint services and printing (The client is encouraged to arrange for printing, other than prints or plots on our printing machine and plotters, to be contracted directly with an outside blueprint company acceptable to us).



MILEAGE

Current rate established by the IRS



MARK	REVISIONS	APPR.	DATE	THESE PLANS HAVE BEEN REVIEWED FOR COMPLIANCE WITH THE APPROPRIATE CONDITIONS OF DEVELOPMENT AND/OR CITY AND STATE LAWS AND HAVE BEEN FOUND ACCEPTABLE	<div><div>CITY OF LAKE ELSINORE</div><div></div></div>	ENGINEER'S SEAL: <div><div>REGISTERED PROFESSIONAL ENGINEER</div><div>REMON A. HABIB</div><div>No. C-83156</div><div>Exp. 3/31/23</div><div>CIVIL</div><div>STATE OF CALIFORNIA</div></div>	BENCHMARK: <div>SEE SHEET 1</div>	CITY OF LAKE ELSINORE	SHEET 2
				REMON HABIB, RCE No. 83156 CITY ENGINEER CITY OF LAKE ELSINORE	3/26-21 DATE	PREPARED BY: C. NORVANI	3/26-21 DATE	LAKESHORE SIDEWALK	OF 3 SHEETS CITY PROJECT NO.
							SCALE: 1"=30'		



MARK	REVISIONS	APPR.	DATE	THESE PLANS HAVE BEEN REVIEWED FOR COMPLIANCE WITH THE APPROPRIATE CONDITIONS OF DEVELOPMENT AND/OR CITY AND STATE LAWS AND HAVE BEEN FOUND ACCEPTABLE <i>Remon Habib</i> REMON HABIB, RCE No. 83156 CITY ENGINEER CITY OF LAKE ELSINORE	 CITY OF LAKE ELSINORE DREAM EXTREME	ENGINEER'S SEAL: 	BENCHMARK: SEE SHEET 1 SCALE: 1"=30'	CITY OF LAKE ELSINORE LAKESHORE SIDEWALK	SHEET 3 OF 3 SHEETS CITY PROJECT NO.
			3/26-21	DATE	PREPARED BY: C. NORVANI	3/26-21 DATE			